

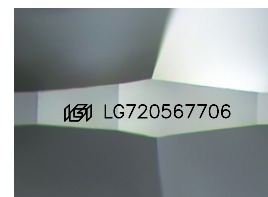
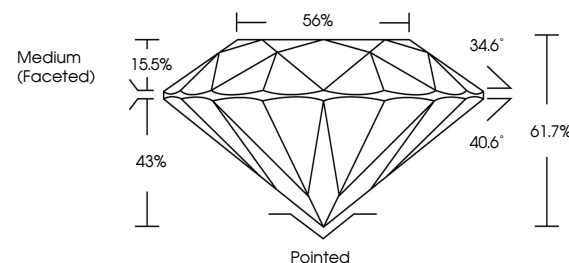


**ELECTRONIC COPY**

## LABORATORY GROWN DIAMOND REPORT

LG720567706  
Report verification at [igi.org](https://igi.org)

## PROPORTIONS



Sample Image Used

## CLARITY CHARACTERISTICS



## KEY TO SYMBOLS

Red symbols indicate internal characteristics.  
Green symbols indicate external characteristics.

## COLOR

D E F G H I J Faint Very Light Light

## CLARITY

IF      WS<sup>1-2</sup>      VS<sup>1-2</sup>      S<sup>1-2</sup>      |<sup>1-3</sup>

Internally Flawless	Very Very Slightly Included	Very Slightly Included	Slightly Included	Included
------------------------	--------------------------------	---------------------------	----------------------	----------



July 7, 2025

IGI Report Number **LG720567706**Description **LABORATORY GROWN DIAMOND**Shape and Cutting Style **ROUND BRILLIANT**

Measurements 7.16 - 7.24 X 4.43 MM

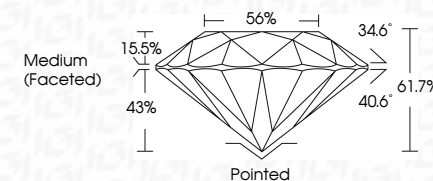
## GRADING RESULTS

Carat Weight **1.41 CARAT**

Color Grade D

Clarity Grade **INTERNALLY FLAWLESS**

Cut Grade **IDEAL**



### ADDITIONAL GRADING INFORMATION

Polish **EXCELLENT**Symmetry **EXCELLENT**Fluorescence **NONE**Inscription(s)  LG720567706

Comments: As Grown - No indication of post-growth treatment.

This Laboratory Grown Diamond was created by High Pressure High Temperature (HPHT) growth process.

Type II

Type II



<p>July 7, 2025</p> <p>Report No. LG720567706</p> <p>GI Round Brilliant</p>	<p>7.16 - 7.24 X 4.83 MM</p> <p>Color Weight</p> <p>Color Grade</p> <p>Clarity Grade</p> <p>Cut Grade</p> <p>Depth</p> <p>Table</p> <p>Girdle</p>	<p>1.41 CARAT</p> <p>D</p> <p>IF</p> <p>IDEAL</p> <p>61.7%</p> <p>56%</p> <p>Medium (Faceted)</p>	<p>Pointed</p> <p>EXCELLENT</p> <p>EXCELLENT</p> <p>NONE</p> <p>1681 LG720567706</p>	<p>Comments:</p> <p>No indication of post-growth treatment.</p> <p>The Laboratory Grown Diamond was created by High Pressure High Temperature (HPHT) growth process.</p> <p>Type II</p>
---	---	---	--	---



THIS DOCUMENT WAS PRODUCED WITH THE FOLLOWING SECURITY MEASURES: SPECIAL DOCUMENT PAPER, INK SCREENS, WATERMARK, BACKGROUND DESIGNS, HOLOGRAM AND OTHER SECURITY FEATURES NOT LISTED AND DO EXCEED DOCUMENT SECURITY INDUSTRY GUIDELINE