

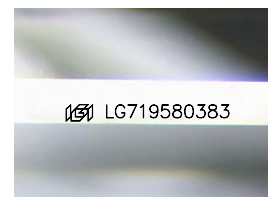
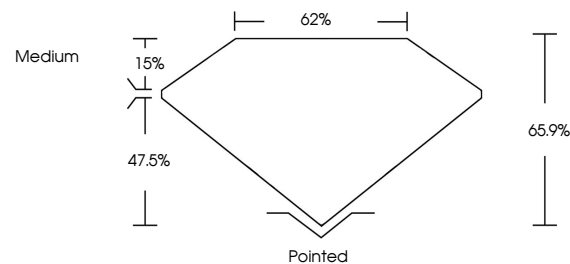


**ELECTRONIC COPY**

## LABORATORY GROWN DIAMOND REPORT

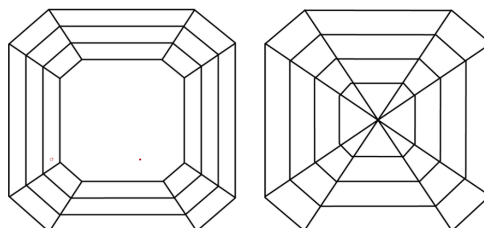
LG719580383  
Report verification at [igi.org](https://igi.org)

## PROPORTIONS



Sample Image Used

## CLARITY CHARACTERISTICS



## KEY TO SYMBOLS

Red symbols indicate internal characteristics.  
Green symbols indicate external characteristics.

## COLOR

D E F G H I J Faint Very Light Light

## CLARITY

IF      VWS<sup>1-2</sup>      VS<sup>1-2</sup>      SI<sup>1-2</sup>      I<sup>1-3</sup>

Internally Flawless	Very Very Slightly Included	Very Slightly Included	Slightly Included	Included
------------------------	--------------------------------	---------------------------	----------------------	----------

## LABORATORY GROWN DIAMOND REPORT



June 30, 2025

IGI Report Number **LG719580383**

Description	LABORATORY GROWN DIAMOND
-------------	--------------------------

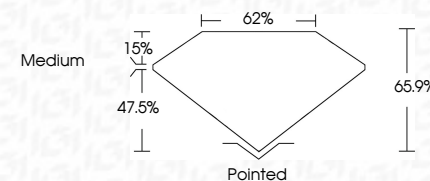
Shape and Cutting Style **SQUARE EMERALD CUT**

Measurements 5.56 X 5.55 X 3.66 MM

## GRADING RESULTS

Carat Weight 1.01 CARAT

Color Grade

Clarity Grade WS 2

### ADDITIONAL GRADING INFORMATION

Polish **EXCELLENT**Symmetry **EXCELLENT**Fluorescence **NONE**Inscription(s)  LG719580383

Comments: This Laboratory Grown Diamond was created by Chemical Vapor Deposition (CVD) growth process.  
Type IIa



June 30, 2025	G Report No LG719500383
SQUARE EMERALD CUT	
1.01 CARAT	VVS 2
Color Grade	E
Clarity Grade	65.9%
Depth	62%
Table	Medium
Girdle	
Culet	Pointed
Polish	EXCELLENT
Symmetry	EXCELLENT
Fluorescence	NONE
Inscriptions(s)	(6) LG719500383

Comments:

The Laboratory Grown Diamond was  
 created via High Pressure High Temperature Deposition  
 (HPHT) growth process.

Type IIA

**Comments:**  
This Laboratory Grown Diamond was created by Chemical Vapor Deposition (CVD) growth process.