

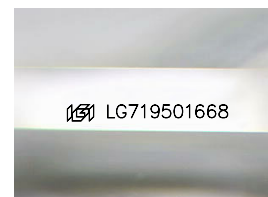
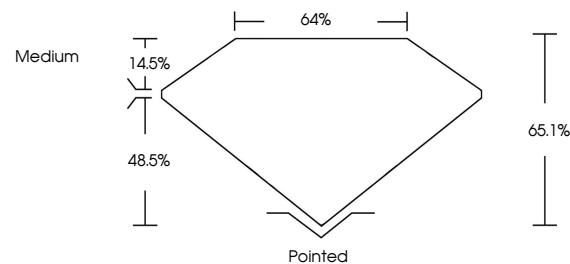


**ELECTRONIC COPY**

## LABORATORY GROWN DIAMOND REPORT

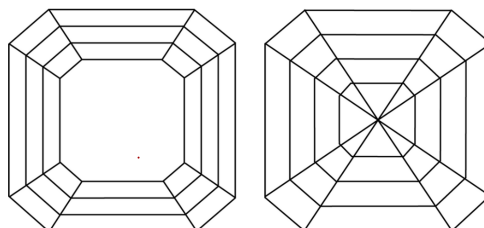
LG719501668  
Report verification at [igi.org](https://igi.org)

## PROPORTIONS



Sample Image Used

## CLARITY CHARACTERISTICS



### KEY TO SYMBOLS

Red symbols indicate internal characteristics.  
Green symbols indicate external characteristics.

## COLOR

D E F G H I J Faint Very Light Light

## CLARITY

IF	VS <sup>1-2</sup>	VS <sup>1-2</sup>	SI <sup>1-2</sup>	I <sup>1-3</sup>
Internally Flawless	Very Very Slightly Included	Very Slightly Included	Slightly Included	Included

## LABORATORY GROWN DIAMOND REPORT



June 24, 2025

IGI Report Number **LG719501668**

Description	LABORATORY GROWN DIAMOND
-------------	--------------------------

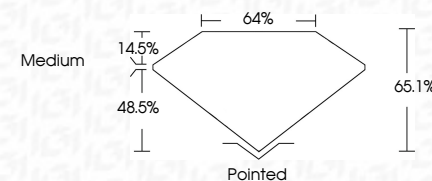
Shape and Cutting Style **SQUARE EMERALD CUT**

Measurements **6.19 X 6.11 X 3.98 MM**

## GRADING RESULTS

Carat Weight **1.35 CARAT**

Color Grade	E
-------------	---

Clarity Grade **VVS 2**

### ADDITIONAL GRADING INFORMATION

Polish **EXCELLENT**Symmetry **EXCELLENT**Fluorescence **NONE**Inscription(s)  LG719501668

Comments: This Laboratory Grown Diamond was created by Chemical Vapor Deposition (CVD) growth process.  
Type IIa



**www.igi.org**

© IGI 2020, International Gemological Institute

FD - 10 20



THIS DOCUMENT WAS PRODUCED WITH THE FOLLOWING SECURITY MEASURES: SPECIAL DOCUMENT PAPER, INK SCREENS, WATERMARK, BACKGROUND DESIGNS, HOLOGRAM AND OTHER SECURITY FEATURES NOT LISTED AND DO EXCEED DOCUMENT SECURITY INDUSTRY GUIDELINES

June 24, 2025  
GI Report No LG719501668  
SQUARE EMERALD CUT

1.35 CARAT	E	VVS 2	66 1%	64%	Medium	Pointed	EXCELLENT	EXCELLENT	NONE	None	1.00 (1.00) 669
1.35 CARAT	E	VVS 2	66 1%	64%	Medium	Pointed	EXCELLENT	EXCELLENT	NONE	None	1.00 (1.00) 669

**Comments:**  
This Laboratory Grown Diamond was created by Chemical Vapor Deposition (CVD) growth process.