

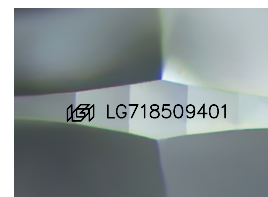
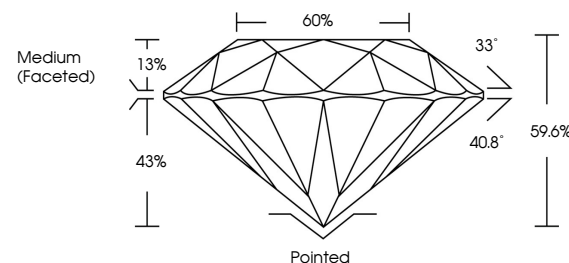


ELECTRONIC COPY

LABORATORY GROWN DIAMOND REPORT

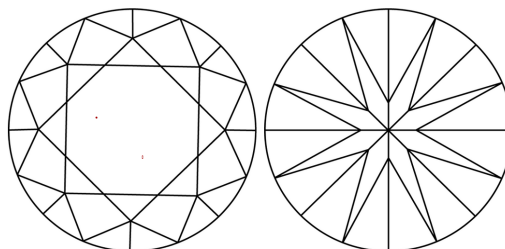
LG718509401
Report verification at igi.org

PROPORTIONS



Sample Image Used

CLARITY CHARACTERISTICS



KEY TO SYMBOLS

Red symbols indicate internal characteristics.
Green symbols indicate external characteristics.

COLOR

D E F G H I J Faint Very Light Light

CLARITY

IF WS¹⁻² VS¹⁻² SI¹⁻² |¹⁻³

Internally Flawless	Very Very Slightly Included	Very Slightly Included	Slightly Included	Included
------------------------	--------------------------------	---------------------------	----------------------	----------



July 3, 2025

IGI Report Number **LG718509401**Description **LABORATORY GROWN DIAMOND**Shape and Cutting Style **ROUND BRILLIANT**

Measurements	10.87 - 10.92 X 6.50 MM
--------------	-------------------------

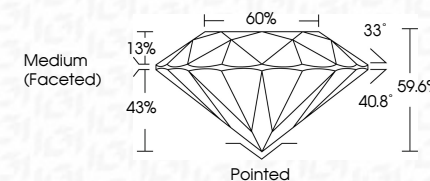
GRADING RESULTS

Carat Weight **4.76 CARATS**

Color Grade F

Clarity Grade VS 1

Cut Grade **IDEAL**



ADDITIONAL GRADING INFORMATION

Polish **EXCELLENT**

Symmetry **EXCELLENT**

Fluorescence **NONE**Inscription(s) LG718509401

Comments: This Laboratory Grown Diamond was created by Chemical Vapor Deposition (CVD) growth process.
Type IIa



© IGI 2020, International Gemological Institute

FD - 10 20

www.igi.org

THIS DOCUMENT WAS PRODUCED WITH THE FOLLOWING SECURITY MEASURES: SPECIAL DOCUMENT PAPER, INK SCREENS, WATERMARK BACKGROUND DESIGNS, HOLOGRAM AND OTHER SECURITY FEATURES NOT LISTED AND DO EXCEED DOCUMENT SECURITY INDUSTRY GUIDELINES

July 3, 2025	4.76 CARATS	VS 1	Pointed
GI Report No. G271850401	F	IDEAL	EXCELLENT
ROUND BRILLIANT		89.6%	EXCELLENT
		60%	None
		Medium (Faceted)	69 G271850401
10.97 x 10.92 x 6.50 MM			
Carat Weight	Color Grade	Clarity Grade	Culet
		Depth	Polish
		Table	Symmetry
		Girdle	Fluorescence
			Inscriptions(s)
Comments:			
The Laboratory Grown Diamond was found to be a natural vapor deposition (CVD) growth process.			
Type IIA			