

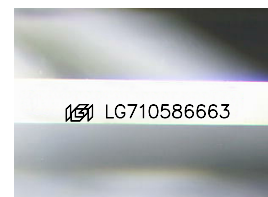
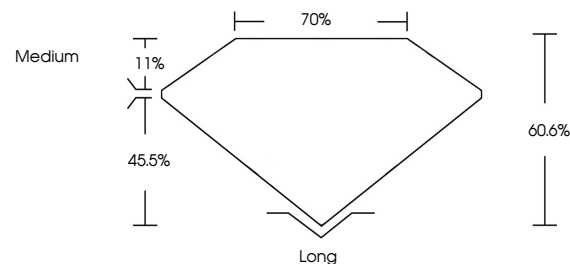


ELECTRONIC COPY

LABORATORY GROWN DIAMOND REPORT

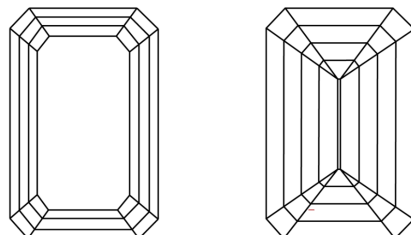
LG710586663
Report verification at igi.org

PROPORTIONS



Sample Image Used

CLARITY CHARACTERISTICS



KEY TO SYMBOLS

Red symbols indicate internal characteristics.
Green symbols indicate external characteristics.

COLOR

D E F G H I J Faint Very Light Light

CLARITY

IF VWS¹⁻² VS¹⁻² SI¹⁻² I¹⁻³

| | | | | |
|------------------------|--------------------------------|---------------------------|----------------------|----------|
| Internally Flawless | Very Very Slightly Included | Very Slightly Included | Slightly Included | Included |
|------------------------|--------------------------------|---------------------------|----------------------|----------|

LABORATORY GROWN DIAMOND REPORT



May 24, 2025

IGI Report Number **LG710586663**Description **LABORATORY GROWN DIAMOND**Shape and Cutting Style **EMERALD CUT**

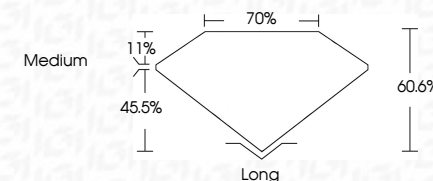
Measurements 10.45 X 6.82 X 4.13 MM

GRADING RESULTS

Carat Weight **3.01 CARATS**

Color Grade D

Clarity Grade VS 1



ADDITIONAL GRADING INFORMATION

Polish **EXCELLENT**Symmetry **EXCELLENT**Fluorescence **NONE**Inscription(s) LG710586663

Comments: This Laboratory Grown Diamond was created by Chemical Vapor Deposition (CVD) growth process.
Type IIa



© IGI 2020, International Gemological Institute

FD - 10 20



THIS DOCUMENT WAS PRODUCED WITH THE FOLLOWING SECURITY MEASURES: SPECIAL DOCUMENT PAPER, INK SCREENS, WATERMARK, BACKGROUND DESIGNS, HOLOGRAM AND OTHER SECURITY FEATURES NOT LISTED AND DO EXCEED DOCUMENT SECURITY INDUSTRY GUIDELINES

www.igi.org

May 24, 2025
GI Report No LG710586663

| | | | |
|-----------------------|---------------|--------|----------------|
| Report No 12710566463 | 3.01 CARATS | VS 1 | Long |
| WEIGHT CARAT | Color Grade | 50.6% | EXCELLENT |
| DEPTH | Clarity Grade | 70% | EXCELLENT |
| TABLE | Depth | Medium | NONE |
| GRADE | Table | | ser12710566463 |
| GRADE | Grade | | |
| Clarity | | | |
| Polish | | | |
| Symmetry | | | |
| Fluorescence | | | |

Comments:
This Laboratory Grown Diamond was
created by Chemical Vapor Deposition
(CVD) growth process.