

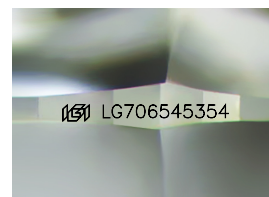
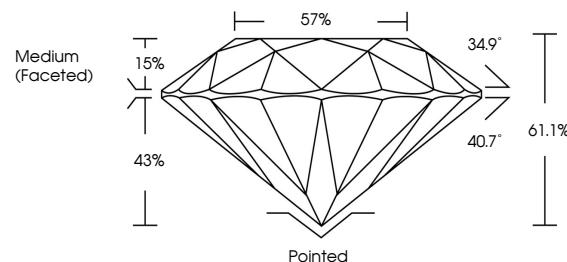


**ELECTRONIC COPY**

## LABORATORY GROWN DIAMOND REPORT

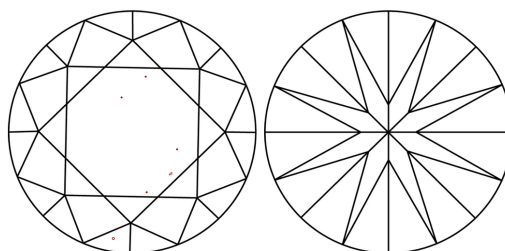
LG706545354  
Report verification at [lgi.org](https://lgi.org)

## PROPORTIONS



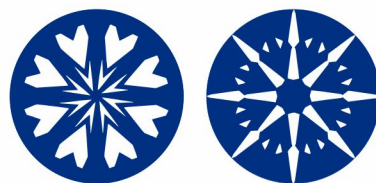
Sample Image Used

## CLARITY CHARACTERISTICS



## KEY TO SYMBOLS

Red symbols indicate internal characteristics.  
Green symbols indicate external characteristics.



**www.igi.org**

## COLOR

D E F G H I J Faint Very Light Light

## CLARITY

IF                      WS<sup>1-2</sup>                      VS<sup>1-2</sup>                      SI<sup>1-2</sup>                      |<sup>1-3</sup>

Internally Flawless	Very Very Slightly Included	Very Slightly Included	Slightly Included	Included
------------------------	--------------------------------	---------------------------	----------------------	----------



© IGI 2020, International Gemological Institute

FD - 10 20

THIS DOCUMENT WAS PRODUCED WITH THE FOLLOWING SECURITY MEASURES: SPECIAL DOCUMENT PAPER, INK SCREENS, WATERMARK, BACKGROUND DESIGNS, HOLOGRAM AND OTHER SECURITY FEATURES NOT LISTED AND DO EXCEED DOCUMENT SECURITY INDUSTRY GUIDELINES

## LABORATORY GROWN DIAMOND REPORT



May 19, 2025

IGI Report Number **LG706545354**Description **LABORATORY GROWN DIAMOND**Shape and Cutting Style **ROUND BRILLIANT**

Measurements	8.38 - 8.42 X 5.13 MM
--------------	-----------------------

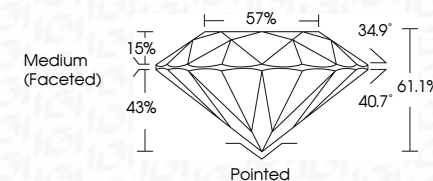
## GRADING RESULTS

Carat Weight **2.21 CARATS**

Color Grade F

Clarity Grade VS 1

Cut Grade **IDEAL**



### ADDITIONAL GRADING INFORMATION

Polish **EXCELLENT**Symmetry **EXCELLENT**Fluorescence **NONE**Inscription(s)  LG706545354

Comments: HEARTS & ARROWS

This Laboratory Grown Diamond was created by Chemical Vapor Deposition (CVD) growth process.  
Type IIa



IG

May 19, 2025  
IGI Report No LG706545354  
ROUND BRILLIANT

<b>6.38 - 6.42 X 5.13 MM</b>		<b>2.21 CARATS</b>	
Carat Weight		Color Grade	VS 1
Clarity Grade		Cut Grade	IDEAL
Table		Depth	61.1%
Girdle			57%
Culet			Medium (Faceted)
Polish			Polished
Symmetry			EXCELLENT
Fluorescence			EXCELLENT
Measurements			NONE
Comments			NO COMMENTS

**Comments:**  
HEARTS & ARROWS  
This Laboratory Grown Diamond was  
created by Chemical Vapor Deposition  
(CVD) growth process.