



# INTERNATIONAL GEMOLOGICAL INSTITUTE

## LABORATORY GROWN DIAMOND REPORT

April 4, 2025  
IGI Report Number **LG691571125**  
Description **LABORATORY GROWN DIAMOND**  
Shape and Cutting Style **EMERALD CUT**  
Measurements **5.55 X 3.75 X 2.65 MM**

### GRADING RESULTS

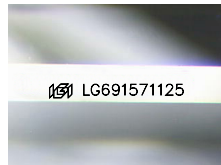
Carat Weight **0.54 CARAT**  
Color Grade **E**  
Clarity Grade **VVS 2**

### ADDITIONAL GRADING INFORMATION

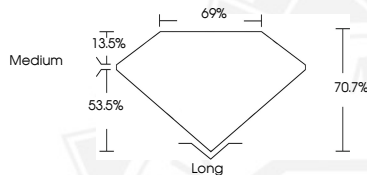
Polish **EXCELLENT**  
Symmetry **EXCELLENT**  
Fluorescence **NONE**  
Inscription(s) **IGI LG691571125**

Comments: As Grown - No indication of post-growth treatment.  
This Laboratory Grown Diamond was created by High Pressure High Temperature (HPHT) growth process.  
Type II

ELECTRONIC COPY



Sample Image Used



April 4, 2025  
IGI Report Number **LG691571125**  
EMERALD CUT  
LABORATORY GROWN DIAMOND  
5.55 X 3.75 X 2.65 MM  
Carat Weight **0.54 CARAT**  
Color Grade **E**  
Clarity Grade **VVS 2**  
Polish **EXCELLENT**  
Symmetry **EXCELLENT**  
Fluorescence **NONE**  
Inscription(s) **IGI LG691571125**

Comments: As Grown - No indication of post-growth treatment. This Laboratory Grown Diamond was created by High Pressure High Temperature (HPHT) growth process. Type II



April 4, 2025  
IGI Report Number **LG691571125**  
EMERALD CUT  
LABORATORY GROWN DIAMOND  
5.55 X 3.75 X 2.65 MM  
Carat Weight **0.54 CARAT**  
Color Grade **E**  
Clarity Grade **VVS 2**  
Polish **EXCELLENT**  
Symmetry **EXCELLENT**  
Fluorescence **NONE**  
Inscription(s) **IGI LG691571125**

Comments: As Grown - No indication of post-growth treatment. This Laboratory Grown Diamond was created by High Pressure High Temperature (HPHT) growth process. Type II



THIS DOCUMENT WAS PRODUCED WITH THE FOLLOWING SECURITY MEASURES: SPECIAL DOCUMENT PAPER, INK SCREENS, WATERMARK, BACKGROUND DESIGNS, HOLOGRAM AND OTHER SECURITY FEATURES NOT LISTED AND DO EXCEED DOCUMENT SECURITY INDUSTRY GUIDELINES.

For terms & conditions and to verify this report, please visit [www.igi.org](http://www.igi.org)