

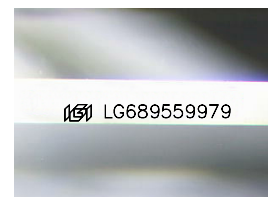
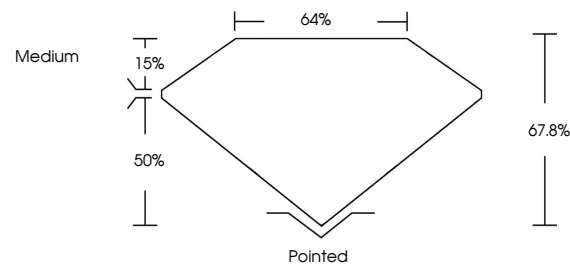


ELECTRONIC COPY

LABORATORY GROWN DIAMOND REPORT

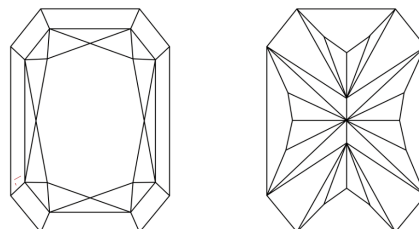
LG689559979
Report verification at igi.org

PROPORTIONS



Sample Image Used

CLARITY CHARACTERISTICS



KEY TO SYMBOLS

Red symbols indicate internal characteristics.
Green symbols indicate external characteristics.

COLOR

D E F G H I J Faint Very Light Light

CLARITY

| IF | VS ¹⁻² | VS ¹⁻² | SI ¹⁻² | I ¹⁻³ |
|---------------------|-----------------------------|------------------------|-------------------|------------------|
| Internally Flawless | Very Very Slightly Included | Very Slightly Included | Slightly Included | Included |

LABORATORY GROWN DIAMOND REPORT



April 26, 2025

IGI Report Number **LG689559979**Description **LABORATORY GROWN DIAMOND**

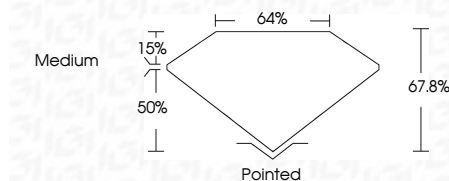
Shape and Cutting Style

Measurements **7.95 X 5.78 X 3.92 MM**

GRADING RESULTS

Carat Weight **1.56 CARAT**

Color Grade E

Clarity Grade VVS 2

ADDITIONAL GRADING INFORMATION

Polish EXCELLENT

Symmetry **EXCELLENT**Fluorescence **NONE**Inscription(s) LG689559979

Comments: This Laboratory Grown Diamond was created by Chemical Vapor Deposition (CVD) growth process.
Type IIa



© IGI 2020, International Gemological Institute

FD - 10 20

www.igi.org

THIS DOCUMENT WAS PRODUCED WITH THE FOLLOWING SECURITY MEASURES: SPECIAL DOCUMENT PAPER, INK SCREENS, WATERMARK BACKGROUND DESIGNS, HOLOGRAM AND OTHER SECURITY FEATURES NOT LISTED AND DO EXCEED DOCUMENT SECURITY INDUSTRY GUIDELINES

| | |
|---------------------------------|-----------------|
| April 26, 2025 | GI Report No. L |
| CUT CORNERED | |
| 7.95 X 5.78 X 3.3 | |
| Carat Weight | |
| Color Grade | |
| Clarity Grade | |
| Depth | |
| Table | |
| Girdle | |
| Culet | |
| Polish | |
| Symmetry | |
| Fluorescence | |
| Inscription(s) | |
| Comments: | |
| This Laboratory created by Chem | |
| CVD growth p | |
| Type Ila | |