

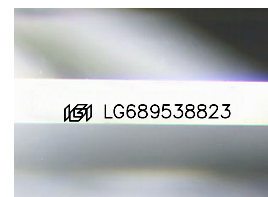
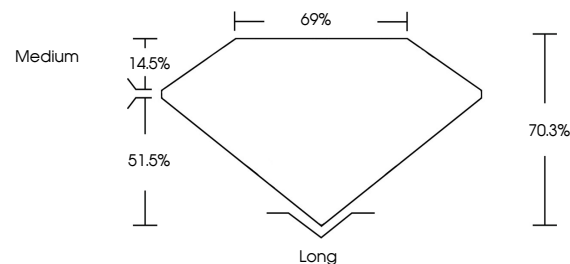


ELECTRONIC COPY

LABORATORY GROWN DIAMOND REPORT

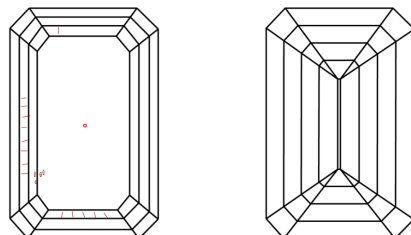
LG689538823
Report verification at igi.org

PROPORTIONS



Sample Image Used

CLARITY CHARACTERISTICS



KEY TO SYMBOLS

Red symbols indicate internal characteristics.
Green symbols indicate external characteristics.

COLOR

D E F G H I J Faint Very Light Light

CLARITY

IF	VS ¹⁻²	VS ¹⁻²	SI ¹⁻²	I ¹⁻³
Internally Flawless	Very Very Slightly Included	Very Slightly Included	Slightly Included	Included

LABORATORY GROWN DIAMOND REPORT



March 7, 2025

IGI Report Number **LG689538823**

Description **LABORATORY GROWN DIAMOND**Shape and Cutting Style **EMERALD CUT**

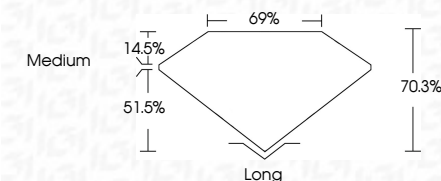
Measurements 7.54 X 5.39 X 3.79 MM

GRADING RESULTS

Carat Weight **1.50 CARAT**

Color Grade D

Clarity Grade VS 2



ADDITIONAL GRADING INFORMATION

Polish **EXCELLENT**Symmetry **EXCELLENT**Fluorescence **NONE**Inscription(s)  LG689538823

Comments: As Grown - No indication of post-growth treatment.

This Laboratory Grown Diamond was created by High Pressure High Temperature (HPHT) growth process.
Type II



© IGI 2020, International Gemological Institute

FD - 10 20



THIS DOCUMENT WAS PRODUCED WITH THE FOLLOWING SECURITY MEASURES: SPECIAL DOCUMENT PAPER, INK SCREENS, WATERMARK, BACKGROUND DESIGNS, HOLOGRAM AND OTHER SECURITY FEATURES NOT LISTED AND DO EXCEED DOCUMENT SECURITY INDUSTRY GUIDELINES

www.igi.org

March 7, 2025
GI Report No LG689538823

GI Report No LG496538823	1.50 CARAT
GENERAL CUT	D
7.54 X 5.39 X 3.79 MM	VS 2
Carat Weight	70.3%
Color Grade	69%
Clarity Grade	Medium
Depth	Long
Table	EXCELLENT
Grades	EXCELLENT
Culet	NONE
Polish	EXCELLENT
Symmetry	EXCELLENT
Fluorescence	NONE
Annotations	See LG496538823

Comments:
As Grown - No indication of post-growth treatment.
This Laboratory Grown Diamond was created by High Pressure High temperature (HPHT) growth process.