



**ELECTRONIC COPY**

## LABORATORY GROWN DIAMOND REPORT

February 17, 2025	
IGI Report Number	LG683547087
Description	LABORATORY GROWN DIAMOND
Shape and Cutting Style	CUT CORNERED RECTANGULAR MODIFIED BRILLIANT
Measurements	11.87 X 8.50 X 5.68 MM

## GRADING RESULTS

Carat Weight	5.02 CARATS
Color Grade	E
Clarity Grade	VVS 2

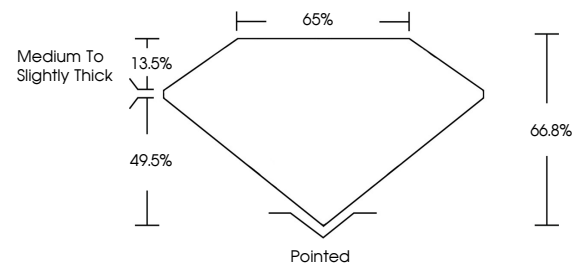
### ADDITIONAL GRADING INFORMATION

Polish	EXCELLENT
Symmetry	EXCELLENT
Fluorescence	NONE
Inscription(s)	 LG683547087

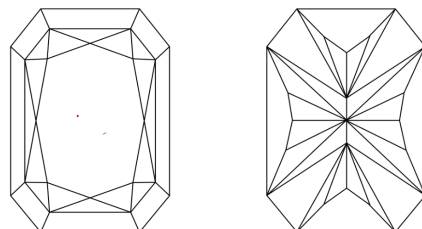
Comments: This Laboratory Grown Diamond was created by Chemical Vapor Deposition (CVD) growth process.  
Type IIa

LG683547087  
Report verification at [igi.org](https://igi.org)

## PROPORTIONS

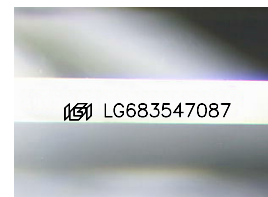


## CLARITY CHARACTERISTICS



## KEY TO SYMBOLS

Red symbols indicate internal characteristics.  
Green symbols indicate external characteristics.



Sample Image Used

**COLOR**

D E F G H I J Faint Very Light Light

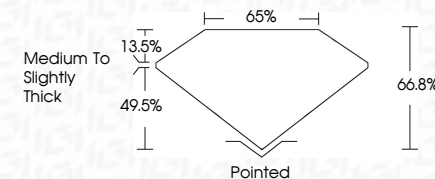
## CLARITY

IF	VS <sup>1-2</sup>	VS <sup>1-2</sup>	SI <sup>1-2</sup>	I <sup>1-3</sup>
Internally Flawless	Very Very Slightly Included	Very Slightly Included	Slightly Included	Included

## LABORATORY GROWN DIAMOND REPORT



February 17, 2025	
IGI Report Number	LG683547087
Description	LABORATORY GROWN DIAMOND
Shape and Cutting Style	CUT CORNERED RECTANGULAR MODIFIED BRILLIANT
Measurements	11.87 X 8.50 X 5.68 MM
<b>GRADING RESULTS</b>	
Carat Weight	5.02 CARATS
Color Grade	E
Clarity Grade	VVS 2



### ADDITIONAL GRADING INFORMATION

Polish	EXCELLENT
Symmetry	EXCELLENT
Fluorescence	NONE
Inscription(s)	 LG683547087
Comments: This Laboratory Grown Diamond was created by Chemical Vapor Deposition (CVD) growth process.	
Type IIa	



© IGI 2020, International Gemological Institute

FD - 10 20



THIS DOCUMENT WAS PRODUCED WITH THE FOLLOWING SECURITY MEASURES: SPECIAL DOCUMENT PAPER, INK SCREENS, WATERMARK, BACKGROUND DESIGNS, HOLOGRAM AND OTHER SECURITY FEATURES NOT LISTED AND DO EXCEED DOCUMENT SECURITY INDUSTRY GUIDELINES

**www.igi.org**

	February 17, 2025	
	GSI Report No LG4935/0787	
	CUT CORNERED RECT. MODIFIED BRILLIANT	
	1.187 X 0.850 X 5.68 MM	
	Carat Weight	5.02 CARATS
	Color Grade	E
	Clarity Grade	VVS 2
	Depth	66.6%
	Table	66%
	Grain	Medium to slightly Thick
	Color	Pinkish
	Polish	EXCELLENT
	Symmetry	EXCELLENT
	Fluorescence	NONE
	Description(s)	#68 LG4935/0787
	Comments:	
		This Laboratory Grown Diamond was created by Chemical Vapor Deposition (CVD) growth process.
	Type IIa	