



ELECTRONIC COPY

LABORATORY GROWN DIAMOND REPORT

February 14, 2025	
IGI Report Number	LG683538299
Description	LABORATORY GROWN DIAMOND
Shape and Cutting Style	SQUARE EMERALD CUT
Measurements	6.96 X 6.95 X 4.74 MM

GRADING RESULTS

Carat Weight	2.12 CARATS
Color Grade	E
Clarity Grade	VVS 2

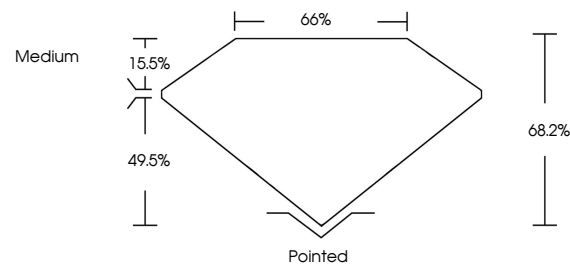
ADDITIONAL GRADING INFORMATION

Polish	EXCELLENT
Symmetry	EXCELLENT
Fluorescence	NONE
Inscription(s)	 LG683538299

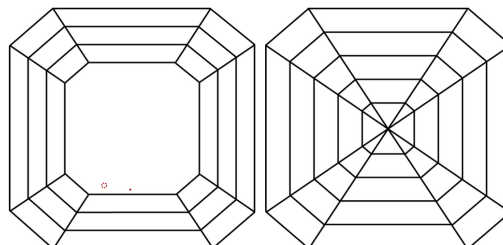
Comments: This Laboratory Grown Diamond was created by Chemical Vapor Deposition (CVD) growth process.
Type IIa

LG683538299
Report verification at igi.org

PROPORTIONS

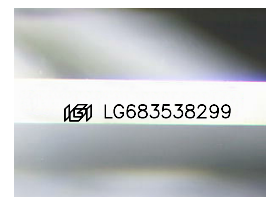


CLARITY CHARACTERISTICS



KEY TO SYMBOLS

Red symbols indicate internal characteristics.
Green symbols indicate external characteristics.



Sample Image Used

COLOR

D E F G H I J Faint Very Light Light

CLARITY

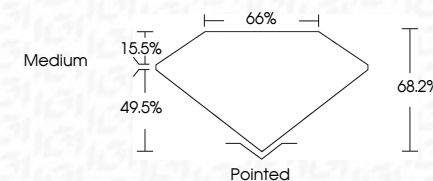
IF	VS ¹⁻²	VS ¹⁻²	SI ¹⁻²	I ¹⁻³
Internally Flawless	Very Very Slightly Included	Very Slightly Included	Slightly Included	Included



February 14, 2025	
IGI Report Number	LG683538299
Description	LABORATORY GROWN DIAMOND
Shape and Cutting Style	SQUARE EMERALD CUT
Measurements	6.96 X 6.95 X 4.74 MM

GRADING RESULTS

Carat Weight	2.12 CARATS
Color Grade	E
Clarity Grade	VVS 2



ADDITIONAL GRADING INFORMATION

Polish	EXCELLENT
Symmetry	EXCELLENT
Fluorescence	NONE
Inscription(s)	 LG683538299
Comments: This Laboratory Grown Diamond was created by Chemical Vapor Deposition (CVD) growth process.	
Type IIa	



© IGI 2020, International Gemological Institute

FD - 10 20

www.igi.org

THIS DOCUMENT WAS PRODUCED WITH THE FOLLOWING SECURITY MEASURES: SPECIAL DOCUMENT PAPER, INK SCREENS, WATERMARK, BACKGROUND DESIGNS, HOLOGRAM AND OTHER SECURITY FEATURES NOT LISTED AND DO EXCEED DOCUMENT SECURITY INDUSTRY GUIDELINES

February 14, 2025	2.12 CARATS
GI Report No. LG48358299	E
SQUARE EMERALD CUT	VVS 2
	68.2%
	65%
	Medium
	Pointed
	EXCELLENT
	EXCELLENT
	NONE
	ISSI LG48358299

Comments:

This is a Chemically Grown Diamond was created by Chemical Vapor Deposition (CVD) growth process.

Type IIa