



**INTERNATIONAL
GEMOLOGICAL
INSTITUTE**

ELECTRONIC COPY

LG681554930
Report verification at igi.org

LABORATORY GROWN DIAMOND REPORT



February 15, 2025

IGI Report Number **LG681554930**

Description	LABORATORY GROWN DIAMOND
-------------	--------------------------

Shape and Cutting Style **ROUND BRILLIANT**

Measurements 7.90 - 7.95 X 4.89 MM

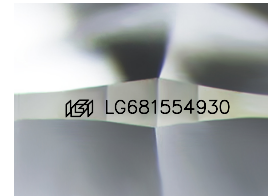
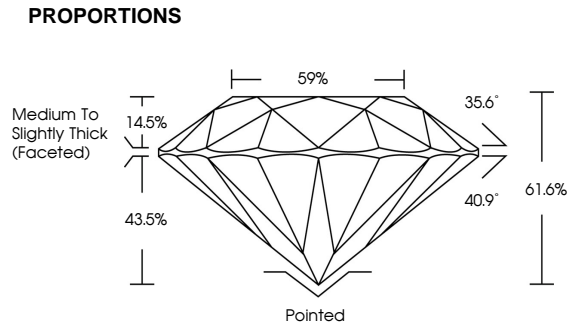
GRADING RESULTS

Carat Weight **1.90 CARAT**

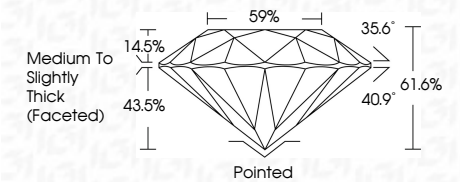
Color Grade	F
-------------	---

Clarity Grade VS 1

Cut Grade **IDEAL**



Sample Image Used



COLOR

D E F G H I J Faint Very Light Light

CLARITY

IF WS¹⁻² VS¹⁻² SI¹⁻² I¹⁻³

Internally Flawless	Very Very Slightly Included	Very Slightly Included	Slightly Included	Included
------------------------	--------------------------------	---------------------------	----------------------	----------



© IGI 2020, International Gemological Institute

FD - 10 20



THIS DOCUMENT WAS PRODUCED WITH THE FOLLOWING SECURITY MEASURES: SPECIAL DOCUMENT PAPER, INK SCREENS, WATERMARK, BACKGROUND DESIGNS, HOLOGRAM AND OTHER SECURITY FEATURES NOT LISTED AND DO EXCEED DOCUMENT SECURITY INDUSTRY GUIDELINES



IGI

February 15, 2025	1.90 CARAT
IGI Report No. LG481554930	F
ROUND BRILLIANT	VS 1
	IDEAL
	61.6%
	59%
	Medium to slightly thick Faceted
	Pointed
	EXCELLENT
	EXCELLENT
	NONE
	689 LG481554930
	Comments:
	This Laboratory Grown Diamond was created by Chemical Vapor Deposition (CVD) growth process.
	Type IIA