

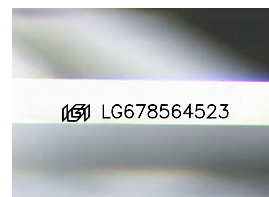
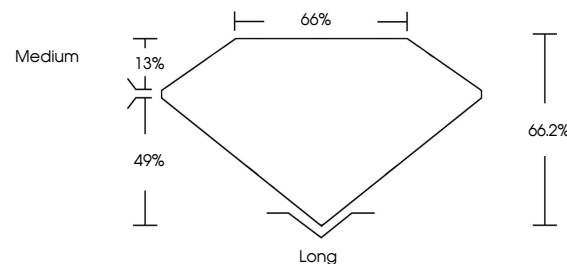


ELECTRONIC COPY

LABORATORY GROWN DIAMOND REPORT

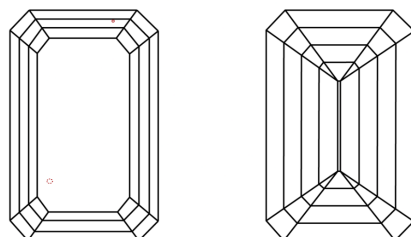
LG678564523
Report verification at lgi.org

PROPORTIONS



Sample Image Used

CLARITY CHARACTERISTICS



KEY TO SYMBOLS

Red symbols indicate internal characteristics.
Green symbols indicate external characteristics.

COLOR

D E F G H I J Faint Very Light Light

CLARITY

IF VWS¹⁻² VS¹⁻² SI¹⁻² I¹⁻³

Internally Flawless	Very Very Slightly Included	Very Slightly Included	Slightly Included	Included
------------------------	--------------------------------	---------------------------	----------------------	----------

LABORATORY GROWN DIAMOND REPORT



January 28, 2025

IGI Report Number **LG678564523**Description **LABORATORY GROWN DIAMOND**Shape and Cutting Style **EMERALD CUT**

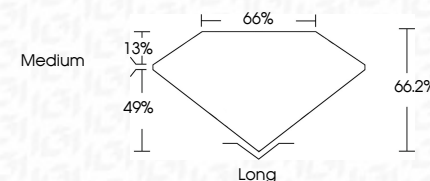
Measurements 6.68 X 4.77 X 3.16 MM

GRADING RESULTS

Carat Weight 1.02 CARAT

Color Grade

Clarity Grade VS 1



ADDITIONAL GRADING INFORMATION

Polish **EXCELLENT**Symmetry **EXCELLENT**Fluorescence **NONE**Inscription(s)  LG678564523

Comments: This Laboratory Grown Diamond was created by Chemical Vapor Deposition (CVD) growth process.
Type IIa



© IGI 2020, International Gemological Institute

FD - 10 20

www.igi.org

THIS DOCUMENT WAS PRODUCED WITH THE FOLLOWING SECURITY MEASURES: SPECIAL DOCUMENT PAPER, INK SCREENS, WATERMARK, BACKGROUND DESIGNS, HOLOGRAM AND OTHER SECURITY FEATURES NOT LISTED AND DO EXCEED DOCUMENT SECURITY INDUSTRY GUIDELINE

January 28, 2025
GI Report No LG678564523

1.0 CARAT	Color Grade	Carat Weight	1.0 CARAT
D	Clarity Grade	3.6 MM	
VS 1	Depth	4.77 X 3.16 MM	
66.2%	Table		
65%	Girdle		
Medium			
Long	Polish		
EXCELLENT	Symmetry		
EXCELLENT	Fluorescence		
NONE	Comments(s)		
			Serial: G479544623

Comments:
This Laboratory Grown Diamond was
created by Chemical Vapor Deposition
(CVD) growth process.