

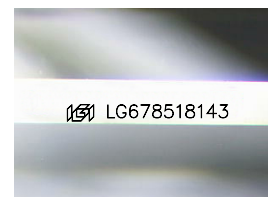
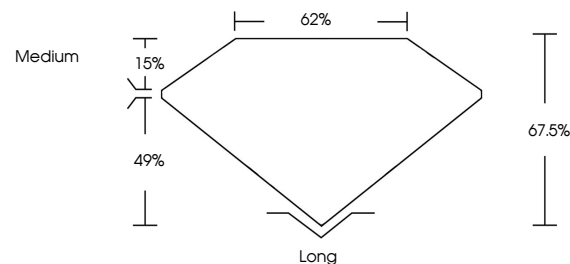


**ELECTRONIC COPY**

## LABORATORY GROWN DIAMOND REPORT

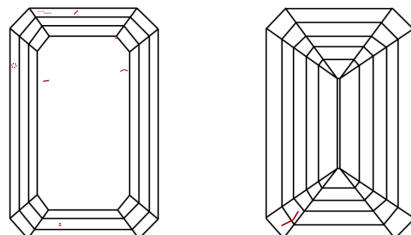
LG678518143  
Report verification at [igi.org](https://igi.org)

## PROPORTIONS



Sample Image Used

## CLARITY CHARACTERISTICS



## KEY TO SYMBOLS

Red symbols indicate internal characteristics.  
Green symbols indicate external characteristics.

## COLOR

D E F G H I J Faint Very Light Light

## CLARITY

IF      VWS<sup>1-2</sup>      VS<sup>1-2</sup>      SI<sup>1-2</sup>      I<sup>1-3</sup>

|                        |                                |                           |                      |          |
|------------------------|--------------------------------|---------------------------|----------------------|----------|
| Internally<br>Flawless | Very Very<br>Slightly Included | Very<br>Slightly Included | Slightly<br>Included | Included |
|------------------------|--------------------------------|---------------------------|----------------------|----------|

## LABORATORY GROWN DIAMOND REPORT



January 28, 2025

IGI Report Number **LG678518143**Description **LABORATORY GROWN DIAMOND**Shape and Cutting Style **EMERALD CUT**

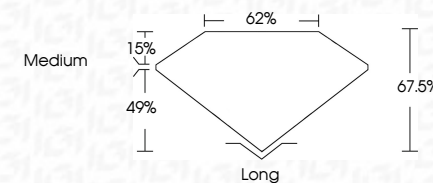
Measurements 9.02 X 6.27 X 4.23 MM

## GRADING RESULTS

Carat Weight **2.54 CARATS**

Color Grade F

Clarity Grade VS 2



### ADDITIONAL GRADING INFORMATION

Polish **EXCELLENT**Symmetry **EXCELLENT**Fluorescence **NONE**Inscription(s)  LG678518143

Comments: This Laboratory Grown Diamond was created by Chemical Vapor Deposition (CVD) growth process.  
Type IIa



**www.igi.org**

© IGI 2020, International Gemological Institute

FD - 10 20



THIS DOCUMENT WAS PRODUCED WITH THE FOLLOWING SECURITY MEASURES: SPECIAL DOCUMENT PAPER, INK SCREENS, WATERMARK, BACKGROUND DESIGNS, HOLOGRAM AND OTHER SECURITY FEATURES NOT LISTED AND DO EXCEED DOCUMENT SECURITY INDUSTRY GUIDELINE

January 28, 2025  
 CGI Report No LG678518143  
 EMERALD CITY

|                       |               |             |
|-----------------------|---------------|-------------|
| 0.02 X 0.27 X 4.23 MM | Carat Weight  | 2.54 CARATS |
|                       | Color Grade   | F           |
|                       | Clarity Grade | Vs 2        |
|                       | Depth         | 67.6%       |
|                       | Table         | 62%         |
|                       | Grade         | Medium      |
|                       | Culet         | Long        |
|                       | Polish        | EXCELLENT   |
|                       | Symmetry      | EXCELLENT   |
|                       | Fluorescence  | NONE        |

**Comments:**  
This Laboratory Grown Diamond was created by Chemical Vapor Deposition (CVD) growth process.