



ELECTRONIC COPY

LABORATORY GROWN DIAMOND REPORT

January 4, 2025	
IGI Report Number	LG674509865
Description	LABORATORY GROWN DIAMOND
Shape and Cutting Style	CUSHION BRILLIANT
Measurements	14.93 X 9.58 X 6.54 MM

GRADING RESULTS

Carat Weight	8.04 CARATS
Color Grade	F
Clarity Grade	VS 2

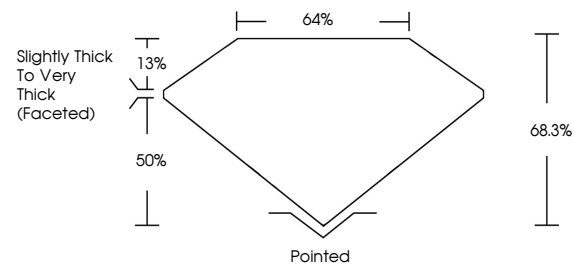
ADDITIONAL GRADING INFORMATION

Polish	EXCELLENT
Symmetry	EXCELLENT
Fluorescence	NONE
Inscription(s)	15 LG674509865

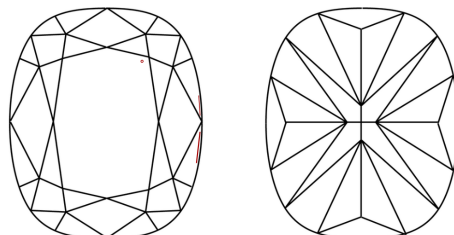
Comments: This Laboratory Grown Diamond was created by Chemical Vapor Deposition (CVD) growth process.
Type IIa

LG674509865
Report verification at igi.org

PROPORTIONS

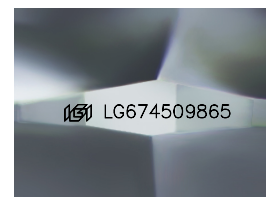


CLARITY CHARACTERISTICS



KEY TO SYMBOLS

Red symbols indicate internal characteristics.
Green symbols indicate external characteristics.



Sample Image Used

COLOR

D E F G H I J Faint Very Light Light

CLARITY

IF	VS ¹⁻²	VS ¹⁻²	SI ¹⁻²	I ¹⁻³
Internally Flawless	Very Very Slightly Included	Very Slightly Included	Slightly Included	Included

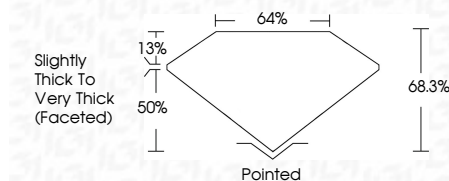
LABORATORY GROWN DIAMOND REPORT



January 4, 2025	
IGI Report Number	LG674509865
Description	LABORATORY GROWN DIAMOND
Shape and Cutting Style	CUSHION BRILLIANT
Measurements	14.93 X 9.58 X 6.54 MM

GRADING RESULTS

Carat Weight	8.04 CARATS
Color Grade	F
Clarity Grade	VS 2



ADDITIONAL GRADING INFORMATION

Polish	EXCELLENT
Symmetry	EXCELLENT
Fluorescence	NONE
Inscription(s)	 LG674509865
Comments: This Laboratory Grown Diamond was created by Chemical Vapor Deposition (CVD) growth process.	
Type IIa	



© IGI 2020, International Gemological Institute

FD - 10 20



THIS DOCUMENT WAS PRODUCED WITH THE FOLLOWING SECURITY MEASURES: SPECIAL DOCUMENT PAPER, INK SCREENS, WATERMARK, BACKGROUND DESIGNS, HOLOGRAM AND OTHER SECURITY FEATURES NOT LISTED AND DO EXCEED DOCUMENT SECURITY INDUSTRY GUIDELINES

www.igi.org

January 4, 2005	0.04 CARATS
GI Report No. G574509465	F
CUSHION BRILLIANT	
14.03 X 9.53 X 6.54 MM	VS 2
	68.3%
	64%
	Slightly Thick to Very Thick (Faceted)
	Pointed
	EXCELLENT
	EXCELLENT
	NONE
	1691 G574509465
Comments:	
The Laboratory Grown Diamond was	
synthesized by the Chemical Vapor Deposition	
(CVD) growth process.	
Type IIG	