

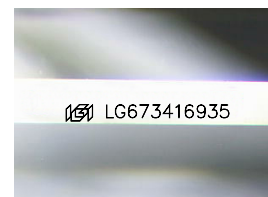
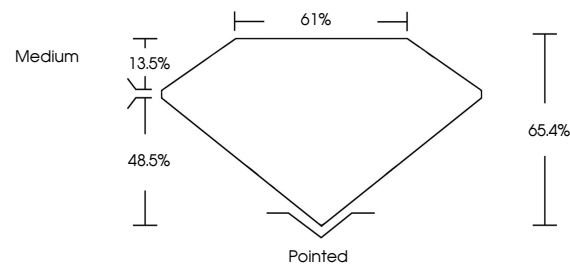


ELECTRONIC COPY

LABORATORY GROWN DIAMOND REPORT

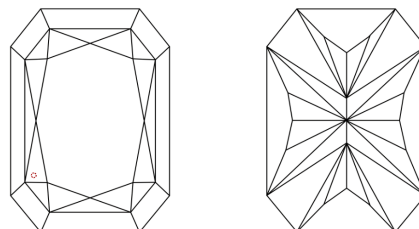
LG673416935
Report verification at igi.org

PROPORTIONS



Sample Image Used

CLARITY CHARACTERISTICS



KEY TO SYMBOLS

Red symbols indicate internal characteristics.
Green symbols indicate external characteristics.

COLOR

D E F G H I J Faint Very Light Light

CLARITY

IF	VS ¹⁻²	VS ¹⁻²	SI ¹⁻²	I ¹⁻³
Internally Flawless	Very Very Slightly Included	Very Slightly Included	Slightly Included	Included

LABORATORY GROWN DIAMOND REPORT



January 5, 2025

IGI Report Number **LG673416935**Description **LABORATORY GROWN DIAMOND**

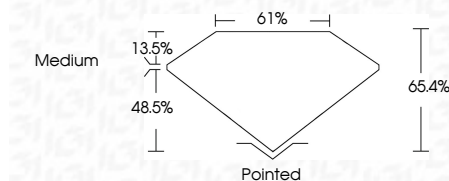
Shape and Cutting Style

Measurements **8.86 X 6.13 X 4.01 MM**

GRADING RESULTS

Carat Weight **1.83 CARAT**

Color Grade E

Clarity Grade VVS 2

ADDITIONAL GRADING INFORMATION

Polish **EXCELLENT**Symmetry **EXCELLENT**Fluorescence NONEInscription(s) LG673416935

Comments: This Laboratory Grown Diamond was created by Chemical Vapor Deposition (CVD) growth process.
Type IIa



© IGI 2020, International Gemological Institute

FD - 10 20

www.igi.org

THIS DOCUMENT WAS PRODUCED WITH THE FOLLOWING SECURITY MEASURES: SPECIAL DOCUMENT PAPER, INK SCREENS, WATERMARK, BACKGROUND DESIGNS, HOLOGRAM AND OTHER SECURITY FEATURES NOT LISTED AND DO EXCEED DOCUMENT SECURITY INDUSTRY GUIDELINE

January 5, 2026	1.83 CARAT	E	VVS 2	65.4%	61%	Medium	Polished	EXCELLENT	EXCELLENT	NONE	6891 LG573416935
GI Report No. LG573416935	6.86 x 4.13 x 4.01 MM	Color Grade	Clarity Grade	Depth	Table	Girdle	Symmetry	Fluorescence	Annotations(s)		
CU CORNERED RECT. MODIFIED BRILLIANT	Carat Weight										

Comments:
 This is a Natural, Fancy, Green Diamond was
 created by Chemical Vapor Deposition
 CVD growth process.
 type IIa