



**ELECTRONIC COPY**

## LABORATORY GROWN DIAMOND REPORT

January 1, 2025	
IGI Report Number	LG671473170
Description	LABORATORY GROWN DIAMOND
Shape and Cutting Style	CUT CORNERED RECTANGULAR MODIFIED BRILLIANT
Measurements	7.59 X 5.58 X 3.76 MM

## GRADING RESULTS

Carat Weight	1.41 CARAT
Color Grade	E
Clarity Grade	VS 2

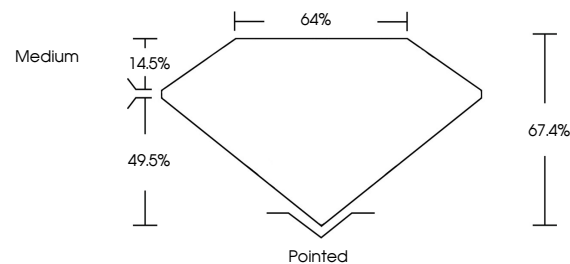
### ADDITIONAL GRADING INFORMATION

Polish	EXCELLENT
Symmetry	EXCELLENT
Fluorescence	NONE
Inscription(s)	 LG671473170

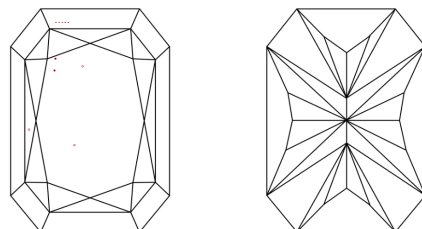
Comments: This Laboratory Grown Diamond was created by Chemical Vapor Deposition (CVD) growth process.  
Type IIa

LG671473170  
Report verification at [igi.org](https://igi.org)

## PROPORTIONS

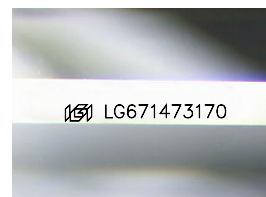


## CLARITY CHARACTERISTICS



## KEY TO SYMBOLS

Red symbols indicate internal characteristics.  
Green symbols indicate external characteristics.



Sample Image Used

## COLOR

D E F G H I J Faint Very Light Light

## CLARITY

IF	VS <sup>1-2</sup>	VS <sup>1-2</sup>	SI <sup>1-2</sup>	I <sup>1-3</sup>
Internally Flawless	Very Very Slightly Included	Very Slightly Included	Slightly Included	Included

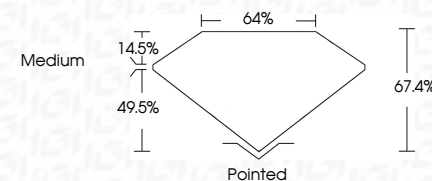
## LABORATORY GROWN DIAMOND REPORT



January 1, 2025	
IGI Report Number	LG671473170
Description	LABORATORY GROWN DIAMOND
Shape and Cutting Style	CUT CORNERED RECTANGULAR MODIFIED BRILLIANT
Measurements	7.59 X 5.58 X 3.76 MM

## GRADING RESULTS

Carat Weight	1.41 CARAT
Color Grade	E
Clarity Grade	VS 2



### ADDITIONAL GRADING INFORMATION

Polish	EXCELLENT
Symmetry	EXCELLENT
Fluorescence	NONE
Inscription(s)	 LG671473170
Comments: This Laboratory Grown Diamond was created by Chemical Vapor Deposition (CVD) growth process.	
Type IIa	



© IGI 2020, International Gemological Institute

FD - 10 20

**www.igi.org**

THIS DOCUMENT WAS PRODUCED WITH THE FOLLOWING SECURITY MEASURES: SPECIAL DOCUMENT PAPER, INK SCREENS, WATERMARK, BACKGROUND DESIGNS, HOLOGRAM AND OTHER SECURITY FEATURES NOT LISTED AND DO EXCEED DOCUMENT SECURITY INDUSTRY GUIDELINE

<b>G Report No G571473170</b>	<b>1.41 CARAT E</b>
<b>CUT CORNERED RECT, MODIFIED BRILLIANT</b>	
<b>WEIGHT 5.99 X 6.88 X 3.76 MM</b>	
<b>Color Weight Color Grade</b>	
<b>Clarity Grade VS 2</b>	
<b>Depth 67.4%</b>	
<b>Table 67.6%</b>	
<b>Grade Medium</b>	
<b>Culet Pointed</b>	
<b>Pavil Polish EXCELLENT</b>	
<b>Symmetry NONE</b>	
<b>Fluorescence Faint Blue</b>	
<b>Measurements (mm) 6.88 x 5.97 x 3.76</b>	

**Comments:**  
This Laboratory Grown Diamond was  
created by Chemical Vapor Deposition  
(CVD) growth process.