

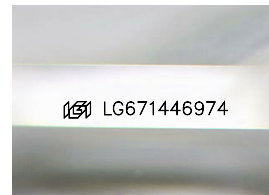
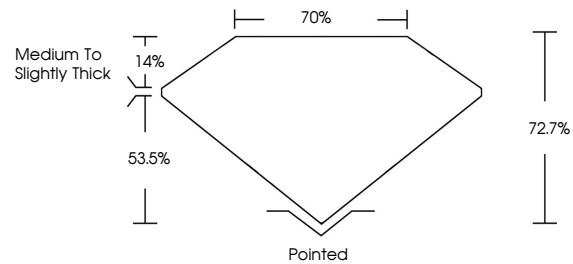


**INTERNATIONAL  
GEMOLOGICAL  
INSTITUTE**

**ELECTRONIC COPY**

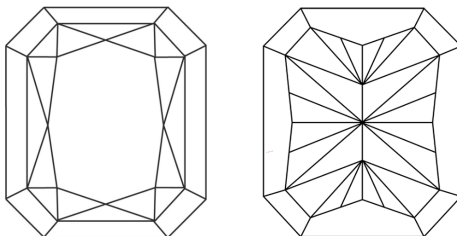
LG671446974  
Report verification at [igi.org](https://igi.org)

## PROPORTIONS



Sample Image Used

## CLARITY CHARACTERISTICS



## KEY TO SYMBOLS

Red symbols indicate internal characteristics.  
Green symbols indicate external characteristics.

**COLOR**

D E F G H I J Faint Very Light Light

## CLARITY

IF	WS <sup>1-2</sup>	VS <sup>1-2</sup>	SI <sup>1-2</sup>	I <sup>1-3</sup>
----	-------------------	-------------------	-------------------	------------------

Internally Flawless	Very Very Slightly Included	Very Slightly Included	Slightly Included	Included
------------------------	--------------------------------	---------------------------	----------------------	----------

## LABORATORY GROWN DIAMOND REPORT



January 1, 2025

IGI Report Number **LG671446974**

Description	LABORATORY GROWN DIAMOND
-------------	--------------------------

Shape and Cutting Style

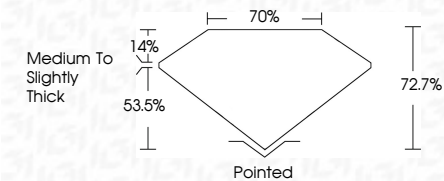
CUT CORNERED  
RECTANGULAR MODIFIED  
BRILLIANT

Measurements 10.10 X 7.19 X 5.23 MM

## GRADING RESULTS

Carat Weight **3.52 CARATS**

Color Grade	E
-------------	---

Clarity Grade **VVS 1**

### ADDITIONAL GRADING INFORMATION

Polish **EXCELLENCE**Symmetry **EXCELLENCE**

Fluorescence NONI

Inscription(s)  LG67144697

Comments: This Laboratory Grown Diamond was created by Chemical Vapor Deposition (CVD) growth process.  
Type IIa



IGI



© IGI 2020, International Gemological Institute

FD - 10 20

**www.igi.org**

THIS DOCUMENT WAS PRODUCED WITH THE FOLLOWING SECURITY MEASURES: SPECIAL DOCUMENT PAPER, INK SCREENS, WATERMARK, BACKGROUND DESIGNS, HOLOGRAM AND OTHER SECURITY FEATURES NOT LISTED AND DO EXCEED DOCUMENT SECURITY INDUSTRY GUIDELINES

<b>January 1, 2026</b>	<b>GI Report No LG571446974</b>	<b>CUT CORNERED RECT. MODIFIED BRILLIANT</b>
<b>10.10 X 7.19 X 5.23 MM</b>	<b>3.52 CARATS</b>	<b>E</b>
<b>Color Grade</b>	<b>VVS 1</b>	<b>Polished</b>
<b>Clarity Grade</b>	<b>72.7%</b>	<b>EXCELLENT</b>
<b>Depth</b>	<b>70%</b>	<b>NONE</b>
<b>Table</b>	<b>Medium to Slightly Thick</b>	<b>INSCRIPTION(S)</b>
<b>Girdle</b>		<b>© LG571446974</b>

**Comments:**  
This Laboratory Grown Diamond was  
created by Chemical Vapor Deposition  
(CVD) growth process.  
Type IIa