



# INTERNATIONAL GEMOLOGICAL INSTITUTE

ELECTRONIC COPY

LG671441446



December 30, 2024

IGI Report Number **LG671441446**  
**MARQUISE BRILLIANT**  
**LABORATORY GROWN DIAMOND**  
**8.55 X 4.45 X 2.82 MM**

Carat Weight **0.60 CARAT**  
Color Grade **E**  
Clarity Grade **VVS 2**  
Polish **EXCELLENT**  
Symmetry **EXCELLENT**  
Fluorescence **NONE**  
Inscription(s) **IGI LG671441446**

Comments: This Laboratory Grown Diamond was created by Chemical Vapor Deposition (CVD) growth process. Type IIa

## LABORATORY GROWN DIAMOND REPORT

December 30, 2024

IGI Report Number

**LG671441446**

Description

**LABORATORY GROWN DIAMOND**

Shape and Cutting Style

**MARQUISE BRILLIANT**

Measurements

**8.55 X 4.45 X 2.82 MM**

### GRADING RESULTS

Carat Weight

**0.60 CARAT**

Color Grade

**E**

Clarity Grade

**VVS 2**

### ADDITIONAL GRADING INFORMATION

Polish

**EXCELLENT**

Symmetry

**EXCELLENT**

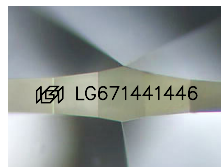
Fluorescence

**NONE**

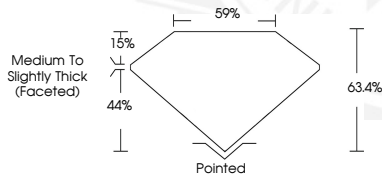
Inscription(s)

**IGI LG671441446**

Comments: This Laboratory Grown Diamond was created by Chemical Vapor Deposition (CVD) growth process.  
Type IIa



Sample Image Used



December 30, 2024

IGI Report Number **LG671441446**  
**MARQUISE BRILLIANT**  
**LABORATORY GROWN DIAMOND**  
**8.55 X 4.45 X 2.82 MM**

Carat Weight **0.60 CARAT**  
Color Grade **E**  
Clarity Grade **VVS 2**  
Polish **EXCELLENT**  
Symmetry **EXCELLENT**  
Fluorescence **NONE**  
Inscription(s) **IGI LG671441446**

Comments: This Laboratory Grown Diamond was created by Chemical Vapor Deposition (CVD) growth process. Type IIa



THIS DOCUMENT WAS PRODUCED WITH THE FOLLOWING SECURITY MEASURES: SPECIAL DOCUMENT PAPER, INK SCREENS, WATERMARK, BACKGROUND DESIGNS, HOLOGRAM AND OTHER SECURITY FEATURES NOT LISTED AND DO EXCEED DOCUMENT SECURITY INDUSTRY GUIDELINES.

For terms & conditions and to verify this report, please visit [www.igi.org](http://www.igi.org)