

**ELECTRONIC COPY**

## LABORATORY GROWN DIAMOND REPORT

|                         |                          |
|-------------------------|--------------------------|
| December 7, 2024        |                          |
| IGI Report Number       | LG668429927              |
| Description             | LABORATORY GROWN DIAMOND |
| Shape and Cutting Style | EMERALD CUT              |
| Measurements            | 8.40 X 5.99 X 4.06 MM    |

## GRADING RESULTS

|               |             |
|---------------|-------------|
| Carat Weight  | 2.01 CARATS |
| Color Grade   | D           |
| Clarity Grade | VS 1        |

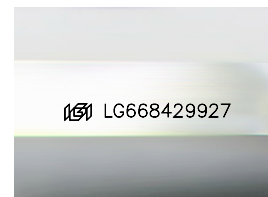
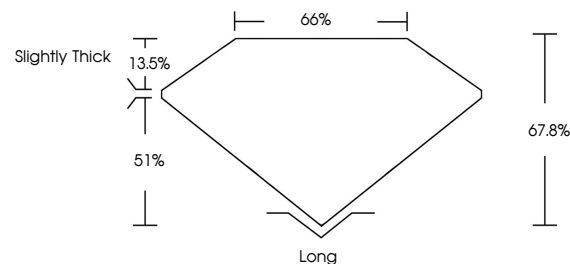
### ADDITIONAL GRADING INFORMATION

|                |   |
|----------------|---|
| Polish         | EXCELLENT   |
| Symmetry       | EXCELLENT   |
| Fluorescence   | NONE  |
| Inscription(s) |  LG668429927 |

Comments: As Grown - No indication of post-growth treatment.  
This Laboratory Grown Diamond was created by High Pressure High Temperature (HPHT) growth process.  
Type II

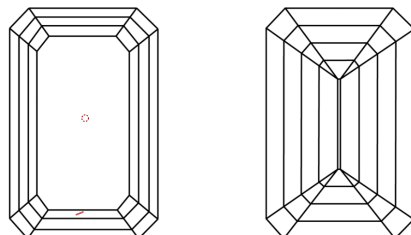
LG668429927  
Report verification at [lgi.org](https://lgi.org)

## PROPORTIONS



Sample Image Used

## CLARITY CHARACTERISTICS



### KEY TO SYMBOLS

Red symbols indicate internal characteristics.  
Green symbols indicate external characteristics.

## COLOR

D E F G H I J Faint Very Light Light

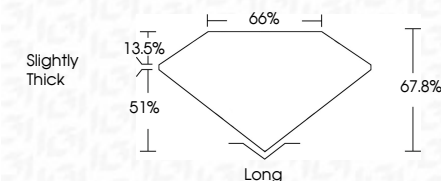
## CLARITY

| IF                  | VS <sup>1-2</sup>           | VS <sup>1-2</sup>      | SI <sup>1-2</sup> | I <sup>1-3</sup> |
|---------------------|-----------------------------|------------------------|-------------------|------------------|
| Internally Flawless | Very Very Slightly Included | Very Slightly Included | Slightly Included | Included         |

## LABORATORY GROWN DIAMOND REPORT



|                         |                          |
|-------------------------|--------------------------|
| December 7, 2024        |                          |
| IGI Report Number       | LG668429927              |
| Description             | LABORATORY GROWN DIAMOND |
| Shape and Cutting Style | EMERALD CUT              |
| Measurements            | 8.40 X 5.99 X 4.06 MM    |
| GRADING RESULTS         |                          |
| Carat Weight            | 2.01 CARATS              |
| Color Grade             | D                        |
| Clarity Grade           | VS 1                     |



### ADDITIONAL GRADING INFORMATION

|  |                            |
|--|----------------------------|
| Polish   | EXCELLENT                  |
| Symmetry   | EXCELLENT                  |
| Fluorescence   | NONE                       |
| Inscription(s)   | <del>(G)</del> LG668429927 |
| <p>Comments: As Grown - No indication of post-growth treatment.</p> <p>This Laboratory Grown Diamond was created by High Pressure High Temperature (HPHT) growth process.</p> <p>Type II</p> |                            |



December 7, 2024  
 IGI Report No LG668429927

|                       |                       |               |       |       |                |       |           |              |      |                      |
|-----------------------|-----------------------|---------------|-------|-------|----------------|-------|-----------|--------------|------|----------------------|
| Report No LG569499927 | 2.01 CARATS           | VS 1          | 67.8% | 66%   | Slightly Thick | Long  | EXCELLENT | EXCELLENT    | NONE | sent 1/24/2019 10:07 |
| GENERATED CUT         | 4.40 X 5.99 X 4.06 MM | Clarity Grade | Depth | Table | Grade          | Color | Symmetry  | Fluorescence |      |                      |
|                       | Color Grade           |               |       |       |                | Quiet | Polish    |              |      |                      |

**Comments:**  
As Grown - No indication of post-growth treatment.  
This Laboratory Grown Diamond was created by High Pressure High temperature (HPHT) growth process.