



**ELECTRONIC COPY**

## LABORATORY GROWN DIAMOND REPORT

November 29, 2024	
IGI Report Number	LG667425152
Description	LABORATORY GROWN DIAMOND
Shape and Cutting Style	MARQUISE BRILLIANT
Measurements	12.47 X 6.60 X 4.24 MM

## GRADING RESULTS

Carat Weight	2.01 CARATS
Color Grade	F
Clarity Grade	VS 1

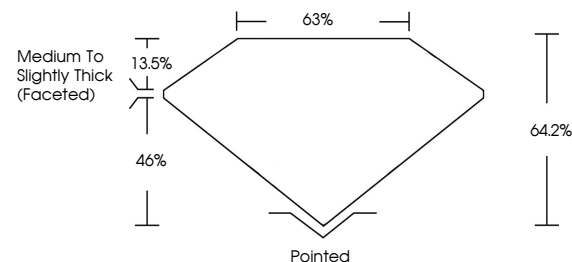
### ADDITIONAL GRADING INFORMATION

Polish	EXCELLENT
Symmetry	EXCELLENT
Fluorescence	NONE
Inscription(s)	15 LG667425152

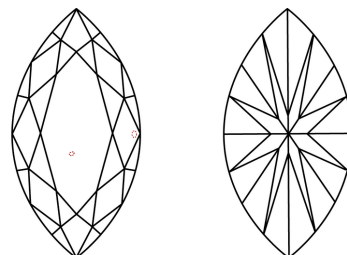
Comments: This Laboratory Grown Diamond was created by Chemical Vapor Deposition (CVD) growth process.  
Type IIa

LG667425152  
Report verification at [iqi.org](https://iqi.org)

## PROPORTIONS



## CLARITY CHARACTERISTICS



## KEY TO SYMBOLS

Red symbols indicate internal characteristics.  
Green symbols indicate external characteristics.

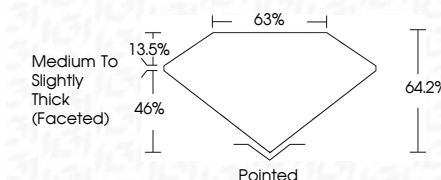
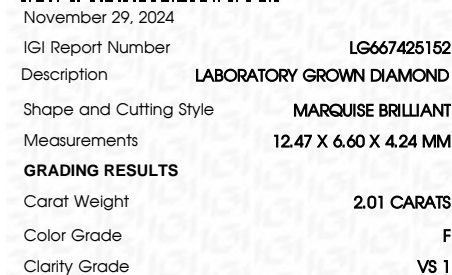
## COLOR

D E F G H I J Faint Very Light Light

## CLARITY

IF      VWS<sup>1-2</sup>      VS<sup>1-2</sup>      SI<sup>1-2</sup>      I<sup>1-3</sup>

Internally Flawless	Very Very Slightly Included	Very Slightly Included	Slightly Included	Included
------------------------	--------------------------------	---------------------------	----------------------	----------



### ADDITIONAL GRADING INFORMATION

Polish	EXCELLENT
Symmetry	EXCELLENT
Fluorescence	NONE
Inscription(s)	 LG667425152
<p>Comments: This Laboratory Grown Diamond was created by Chemical Vapor Deposition (CVD) growth process.</p> <p>Type IIa</p>	



© IGI 2020, International Gemological Institute

FD - 10 20

**www.igi.org**

THIS DOCUMENT WAS PRODUCED WITH THE FOLLOWING SECURITY MEASURES: SPECIAL DOCUMENT PAPER, INK SCREENS, WATERMARK BACKGROUND DESIGNS, HOLOGRAM AND OTHER SECURITY FEATURES NOT LISTED AND DO EXCEED DOCUMENT SECURITY INDUSTRY GUIDELINES

November 29, 2024	2.01 CARATS
GI Report No LG657426152	F
MARQUESE BRILLIANT	VS 1
	64.2%
	65%
	Medium to Slightly Thick (Faceted)
	Ported
	EXCELLENT
	EXCELLENT
	NONE
	ISS: LG657426152

Comments: Many Grow Diagrams was created by Chemical Vapor Deposition (CVD) growth process.  
Type IIa