

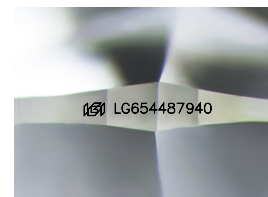
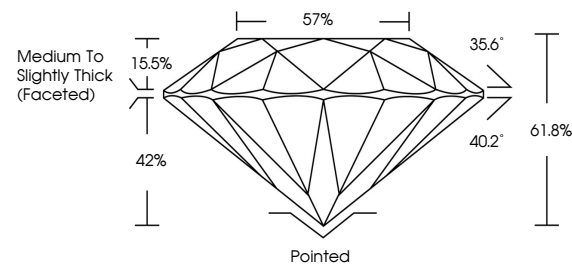


**ELECTRONIC COPY**

## LABORATORY GROWN DIAMOND REPORT

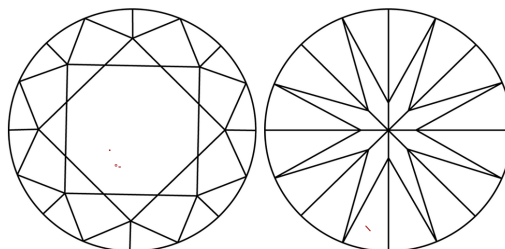
LG654487940  
Report verification at [igi.org](https://igi.org)

## PROPORTIONS



Sample Image Used

## CLARITY CHARACTERISTICS



## KEY TO SYMBOLS

Red symbols indicate internal characteristics.  
Green symbols indicate external characteristics.

## COLOR

D E F G H I J Faint Very Light Light

## CLARITY

IF	VVS <sup>1-2</sup>	VS <sup>1-2</sup>	SI <sup>1-2</sup>	I <sup>1-3</sup>
Internally Flawless	Very Very Slightly Included	Very Slightly Included	Slightly Included	Included



© IGI 2020, International Gemological Institute

FD - 10 20

**www.igi.org**

## LABORATORY GROWN DIAMOND REPORT



October 12, 2024

IGI Report Number **LG654487940**Description **LABORATORY GROWN DIAMOND**Shape and Cutting Style **ROUND BRILLIANT**

Measurements 8.01 - 8.03 X 4.95 MM

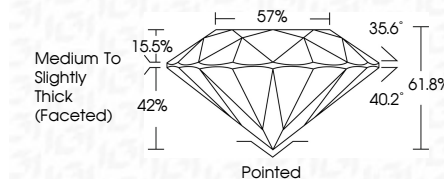
## GRADING RESULTS

Carat Weight 1.98 CARAT

Color Grade F

Clarity Grade VS 1

Cut Grade **IDEAL**



### ADDITIONAL GRADING INFORMATION

Polish **EXCELLENT**Symmetry **EXCELLENT**Fluorescence **NONE**Inscription(s)  LG654487940

Comments: This Laboratory Grown Diamond was created by Chemical Vapor Deposition (CVD) growth process.  
Type IIa



October 12, 2024  
IGI Report No LG654487940  
ROUND BRILLIANT

8.01 - 8.03 X 4.95 MM  
Carat Weight  
1.98 CARAT  
Color Grade  
F

Color Grade	VS 1	IDEAL
Clarity Grade		
Cut Grade		

Depth	61.8%
Table	57%
Girdle	Medium To Slightly Thick (Faceted)

Culet	Pointed
Polish	EXCELLENT
Symmetry	EXCELLENT

Symmetry	EXCELLENT
Fluorescence	NONE
Refractive Index (n)	1.554 (1870 Å)

**Comments:**  
This Laboratory Grown Diamond was created by Chemical Vapor Deposition (CVD) growth process.