



ELECTRONIC COPY

LABORATORY GROWN DIAMOND REPORT

October 1, 2024	
IGI Report Number	LG654412579
Description	LABORATORY GROWN DIAMOND
Shape and Cutting Style	CUT CORNERED RECTANGULAR MODIFIED BRILLIANT
Measurements	9.69 X 6.88 X 4.47 MM

GRADING RESULTS

Carat Weight	2.57 CARATS
Color Grade	E
Clarity Grade	VS 2

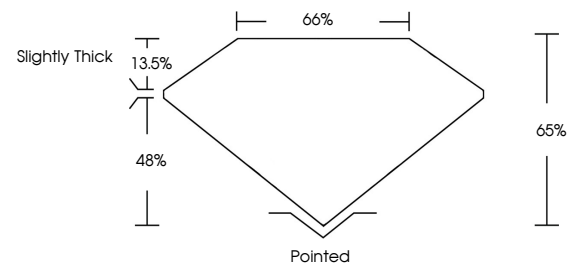
ADDITIONAL GRADING INFORMATION

Polish	EXCELLENT
Symmetry	EXCELLENT
Fluorescence	NONE
Inscription(s)	 LG654412579

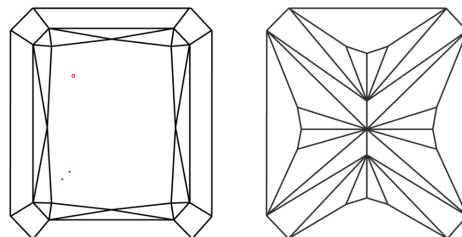
Comments: This Laboratory Grown Diamond was created by Chemical Vapor Deposition (CVD) growth process.
Type IIa

LG654412579
Report verification at lgi.org

PROPORTIONS

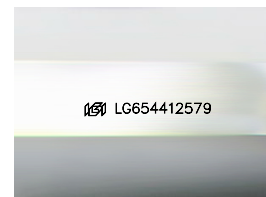


CLARITY CHARACTERISTICS



KEY TO SYMBOLS

Red symbols indicate internal characteristics.
Green symbols indicate external characteristics.



Sample Image Used

COLOR

D E F G H I J Faint Very Light Light

CLARITY

IF	VVS ¹⁻²	VS ¹⁻²	SI ¹⁻²	I ¹⁻³
Internally Flawless	Very Very Slightly Included	Very Slightly Included	Slightly Included	Included



© IGI 2020, International Gemological Institute

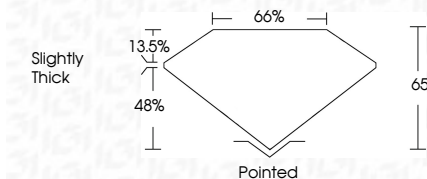
FD - 10 20

www.igi.org

LABORATORY GROWN DIAMOND REPORT



October 1, 2024	
IGI Report Number	LG654412579
Description	LABORATORY GROWN DIAMOND
Shape and Cutting Style	CUT CORNERED RECTANGULAR MODIFIED BRILLIANT
Measurements	9.69 X 6.88 X 4.47 MM
GRADING RESULTS	
Carat Weight	2.57 CARATS
Color Grade	E
Clarity Grade	VS 2



ADDITIONAL GRADING INFORMATION

Polish	EXCELLENT
Symmetry	EXCELLENT
Fluorescence	NONE
Inscription(s)	 LG654412579
<p>Comments: This Laboratory Grown Diamond was created by Chemical Vapor Deposition (CVD) growth process.</p> <p>Type IIa</p>	



October 1, 2024	GI Report No LGAS412579	2.57 X 6.88 X 4.47 MM	2.57 CARATS	Vs 2	Slightly Thick	Pointed	EXCELLENT EXCELLENT NONE NONE	see LGAS412579
CU CUT CORNERED RECT. MODIFIED BRILLIANT	Color Weight	Color Grade	Clarity Grade	Depth		Culet		
			Table	65%		Polish		
			Girdle	65%		Symmetry		
						Fluorescence		

Comments:
This Laboratory Grown Diamond was
created by Chemical Vapor Deposition
(CVD) growth process.