



# INTERNATIONAL GEMOLOGICAL INSTITUTE

## LABORATORY GROWN DIAMOND REPORT

September 16, 2024

IGI Report Number

LG652439519

Description

LABORATORY GROWN DIAMOND

Shape and Cutting Style

EMERALD CUT

Measurements

5.89 X 3.83 X 2.47 MM

### GRADING RESULTS

Carat Weight

0.58 CARAT

Color Grade

D

Clarity Grade

VS 1

### ADDITIONAL GRADING INFORMATION

Polish

EXCELLENT

Symmetry

EXCELLENT

Fluorescence

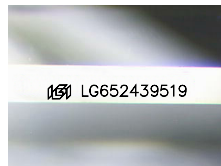
NONE

Inscription(s)

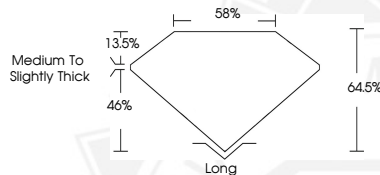
IGI LG652439519

Comments: This Laboratory Grown Diamond was created by Chemical Vapor Deposition (CVD) growth process. Type IIa

ELECTRONIC COPY



Sample Image Used



September 16, 2024

IGI Report Number LG652439519

EMERALD CUT

LABORATORY GROWN DIAMOND

5.89 X 3.83 X 2.47 MM

Carat Weight 0.58 CARAT

Color Grade D

Clarity Grade VS 1

Polish EXCELLENT

Symmetry EXCELLENT

Fluorescence NONE

Inscription(s) IGI LG652439519

Comments: This Laboratory Grown Diamond was created by Chemical Vapor Deposition (CVD) growth process. Type IIa



September 16, 2024

IGI Report Number LG652439519

EMERALD CUT

LABORATORY GROWN DIAMOND

5.89 X 3.83 X 2.47 MM

Carat Weight 0.58 CARAT

Color Grade D

Clarity Grade VS 1

Polish EXCELLENT

Symmetry EXCELLENT

Fluorescence NONE

Inscription(s) IGI LG652439519

Comments: This Laboratory Grown Diamond was created by Chemical Vapor Deposition (CVD) growth process. Type IIa



THIS DOCUMENT WAS PRODUCED WITH THE FOLLOWING SECURITY MEASURES: SPECIAL DOCUMENT PAPER, INK SCREENS, WATERMARK, BACKGROUND DESIGN, HOLOGRAM AND OTHER SECURITY FEATURES NOT LISTED AND DO EXCEED DOCUMENT SECURITY INDUSTRY GUIDELINES.

For terms & conditions and to verify this report, please visit [www.igi.org](http://www.igi.org)