



ELECTRONIC COPY

LABORATORY GROWN DIAMOND REPORT

August 29, 2024	
IGI Report Number	LG649426312
Description	LABORATORY GROWN DIAMOND
Shape and Cutting Style	CUSHION BRILLIANT
Measurements	7.24 X 5.21 X 3.52 MM

GRADING RESULTS

Carat Weight	1.07 CARAT
Color Grade	F
Clarity Grade	VS 2

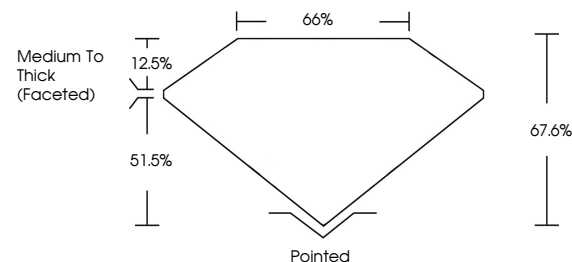
ADDITIONAL GRADING INFORMATION

Polish	EXCELLENT
Symmetry	EXCELLENT
Fluorescence	NONE
Inscription(s)	131 LG649426312

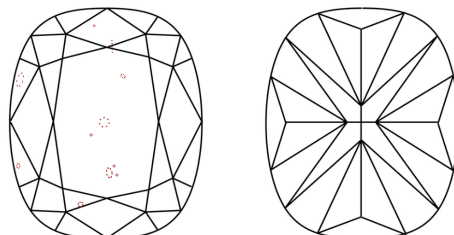
Comments: This Laboratory Grown Diamond was created by Chemical Vapor Deposition (CVD) growth process.
Type IIa

LG649426312
Report verification at lgi.org

PROPORTIONS

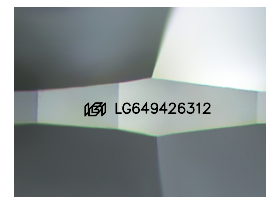


CLARITY CHARACTERISTICS



KEY TO SYMBOLS

Red symbols indicate internal characteristics.
Green symbols indicate external characteristics.



Sample Image Used

COLOR

D E F G H I J Faint Very Light Light

CLARITY

IF	VS ¹⁻²	VS ¹⁻²	SI ¹⁻²	I ¹⁻³
Internally Flawless	Very Very Slightly Included	Very Slightly Included	Slightly Included	Included

LABORATORY GROWN DIAMOND REPORT



August 29, 2024	
IGI Report Number	LG649426312
Description	LABORATORY GROWN DIAMOND
Shape and Cutting Style	CUSHION BRILLIANT
Measurements	7.24 X 5.21 X 3.52 MM

GRADING RESULTS

Carat Weight	1.07 CARAT
Color Grade	F
Clarity Grade	VS 2

ADDITIONAL GRADING INFORMATION

Polish	EXCELLENT
Symmetry	EXCELLENT
Fluorescence	NONE
Inscription(s)	163 LG649426312
<p>Comments: This Laboratory Grown Diamond was created by Chemical Vapor Deposition (CVD) growth process.</p> <p>Type IIa</p>	



IG

© IGI 2020, International Gemological Institute

FD - 10 20



THIS DOCUMENT WAS PRODUCED WITH THE FOLLOWING SECURITY MEASURES: SPECIAL DOCUMENT PAPER, INK SCREENS, WATERMARK, BACKGROUND DESIGNS, HOLOGRAM AND OTHER SECURITY FEATURES NOT LISTED AND DO EXCEED DOCUMENT SECURITY INDUSTRY GUIDELINES

August 29, 2024	Card Weight	VS 2	F	1.07 CARAT
GJ Report No LG49426312	Color Grade	67.6%		
CUSHION BRILLIANT	24 X 8.21 X 3.82 MM	65%		
		Medium To Thick		
		(Faceted)		
		Pinked		
		EXCELLENT		
		EXCELLENT		
		NONE		
		ISSN LG49426312		

Comments:

This Laboratory Grown Diamond was created by Chemical Vapor Deposition process.

Type IIc

Comments:
This Laboratory Grown Diamond was
created by Chemical Vapor Deposition
(CVD) growth process.