



ELECTRONIC COPY

LABORATORY GROWN DIAMOND REPORT

July 4, 2024	
IGI Report Number	LG636412762
Description	LABORATORY GROWN DIAMOND
Shape and Cutting Style	CUT CORNERED RECTANGULAR MODIFIED BRILLIANT
Measurements	8.21 X 5.80 X 3.92 MM

GRADING RESULTS

Carat Weight	1.58 CARAT
Color Grade	E
Clarity Grade	VVS 1

ADDITIONAL GRADING INFORMATION

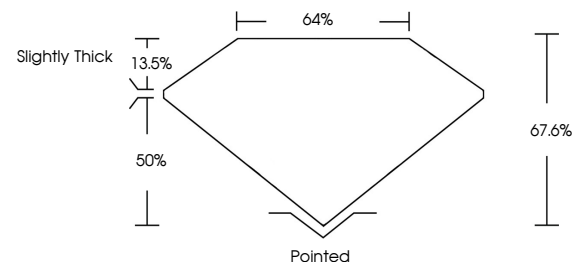
Polish	EXCELLENT
Symmetry	EXCELLENT
Fluorescence	NONE
Inscription(s)	 LG636412762

Comments: As Grown - No indication of post-growth treatment.

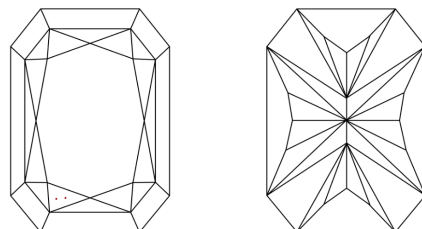
This Laboratory Grown Diamond was created by High Pressure High Temperature (HPHT) growth process.
Type II

LG636412762
Report verification at igi.org

PROPORTIONS

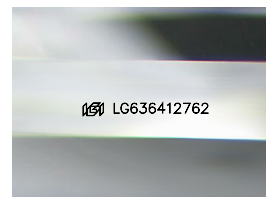


CLARITY CHARACTERISTICS



KEY TO SYMBOLS

Red symbols indicate internal characteristics.
Green symbols indicate external characteristics.



Sample Image Used

COLOR

D E F G H I J Faint Very Light Light

CLARITY

IF	VVS ¹⁻²	VS ¹⁻²	SI ¹⁻²	I ¹⁻³
Internally Flawless	Very Very Slightly Included	Very Slightly Included	Slightly Included	Included



© IGI 2020, International Gemological Institute

FD - 10 20

www.igi.org

LABORATORY GROWN DIAMOND REPORT

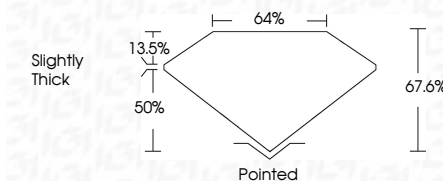


July 4, 2024	
IGI Report Number	LG636412762
Description	LABORATORY GROWN DIAMOND
Shape and Cutting Style	CUT CORNERED RECTANGULAR MODIFIED BRILLIANT

Measurements **8.21 X 5.80 X 3.92 MM**

GRADING RESULTS

Carat Weight	1.58 CARAT
Color Grade	E
Clarity Grade	VVS1



ADDITIONAL GRADING INFORMATION

Polish	EXCELLENT
Symmetry	EXCELLENT
Fluorescence	NONE
Inscription(s)	LG636412762

Comments: As Grown - No indication of post-growth treatment.

This Laboratory Grown Diamond was created by High Pressure High Temperature (HPHT) growth process.



July 4, 2024	1.58 CARAT	VS1	Polished
IG Report No. IG56412762	E	67.5%	EXCELLENT
GUT CORNERED RECT. MODIFIED BRILLIANT		64%	EXCELLENT
		Slightly Thick	NONE
2.121 X 5.60 X 3.92 MM			IG56412762
Carat Weight	Clarity Grade	Depth	Culet
Color Grade	Table	Grade	Polish
			Symmetry
			Fluorescence

Comments:
As Grown - No indication of post-growth treatment.