



ELECTRONIC COPY

LABORATORY GROWN DIAMOND REPORT

| | |
|-------------------------|-----------------------------|
| March 20, 2024 | |
| IGI Report Number | LG626495953 |
| Description | LABORATORY GROWN DIAMOND |
| Shape and Cutting Style | EMERALD CUT |
| Measurements | 8.74 X 6.45 X 4.23 MM |

GRADING RESULTS

| | |
|---------------|-------------|
| Carat Weight | 2.51 CARATS |
| Color Grade | D |
| Clarity Grade | VS 1 |

ADDITIONAL GRADING INFORMATION

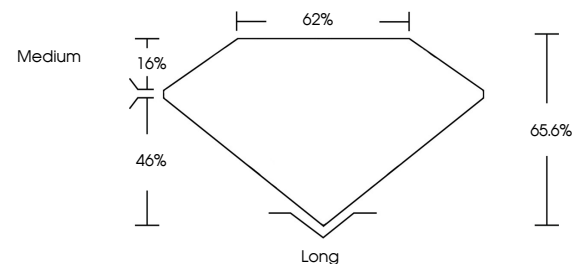
| | |
|----------------|---|
| Polish | EXCELLENT |
| Symmetry | EXCELLENT |
| Fluorescence | NONE |
| Inscription(s) |  LG626495953 |

Comments: This Laboratory Grown Diamond was created by Chemical Vapor Deposition (CVD) growth process and may include post-growth treatment.
Type IIa

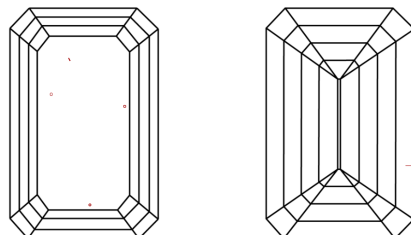
LABORATORY GROWN DIAMOND REPORT

LG626495953
Report verification at igi.org

PROPORTIONS



CLARITY CHARACTERISTICS



KEY TO SYMBOLS

Red symbols indicate internal characteristics.
Green symbols indicate external characteristics.

LABORATORY GROWN
DIAMOND REPORT

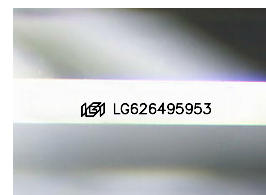
GRADING SCALES

CLARITY

| IF | VVS ¹⁻² | VS ¹⁻² | SI ¹⁻² | I ¹⁻³ |
|------------------------|--------------------------------|---------------------------|----------------------|------------------|
| Internally Flawless | Very Very Slightly Included | Very Slightly Included | Slightly Included | Included |

COLOR

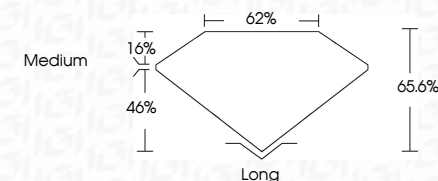
D E F G H I J Faint Very Light Light



Sample Image Used



| | |
|-------------------------|-----------------------------|
| March 20, 2024 | |
| IGI Report Number | LG626495953 |
| Description | LABORATORY GROWN DIAMOND |
| Shape and Cutting Style | EMERALD CUT |
| Measurements | 8.74 X 6.45 X 4.23 MM |
| GRADING RESULTS | |
| Carat Weight | 2.51 CARATS |
| Color Grade | D |
| Clarity Grade | VS 1 |



ADDITIONAL GRADING INFORMATION

| | |
|----------------|------------------|
| Polish | EXCELLENT |
| Symmetry | EXCELLENT |
| Fluorescence | NONE |
| Inscription(s) | (15) LG626495953 |

Comments: This Laboratory Grown Diamond was created by Chemical Vapor Deposition (CVD) growth process and may include post-growth treatment.
Type IIa



© IGI 2020, International Gemological Institute

FD - 10 20



THIS DOCUMENT WAS PRODUCED WITH THE FOLLOWING SECURITY MEASURES: SPECIAL DOCUMENT PAPER, INK SCREENS, WATERMARK, BACKGROUND DESIGNS, HOLOGRAM AND OTHER SECURITY FEATURES NOT LISTED AND DO EXCEED DOCUMENT SECURITY INDUSTRY GUIDELINE

www.igi.org

March 20, 2024
GI Report No LG626495953

| | |
|-----------------------|-------------|
| 2.74 X 6.45 X 4.23 MM | 2.51 CARATS |
| Carat Weight | VS 1 |
| Color Grade | GSI G6 |
| Clarity Grade | 62% |
| Depth | Medium |
| Table | Long |
| Girdle | EXCELLENT |
| Culet | EXCELLENT |
| Polish | NONE |
| Symmetry | |
| Fluorescence | |

Comments:
This Laboratory Grown Diamond was created by Chemical Vapor Deposition (CVD) growth process and may include post-growth treatment.