



**INTERNATIONAL
GEMOLOGICAL
INSTITUTE**

ELECTRONIC COPY

LABORATORY GROWN DIAMOND REPORT

| | |
|-------------------------|--------------------------|
| May 2, 2024 | |
| IGI Report Number | LG621487861 |
| Description | LABORATORY GROWN DIAMOND |
| Shape and Cutting Style | ROUND BRILLIANT |
| Measurements | 8.35 - 8.42 X 5.24 MM |

GRADING RESULTS

| | |
|---------------|-------------|
| Carat Weight | 2.29 CARATS |
| Color Grade | F |
| Clarity Grade | VS 1 |
| Cut Grade | IDEAL |

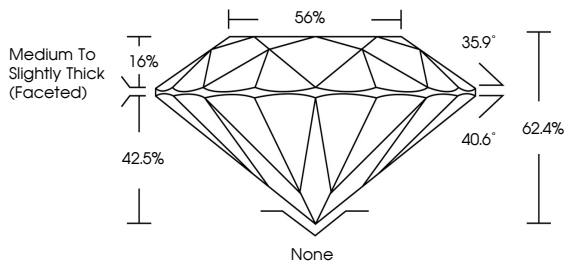
ADDITIONAL GRADING INFORMATION

| | |
|----------------|---|
| Polish | EXCELLENT |
| Symmetry | EXCELLENT |
| Fluorescence | NONE |
| Inscription(s) |  LG621487861 |

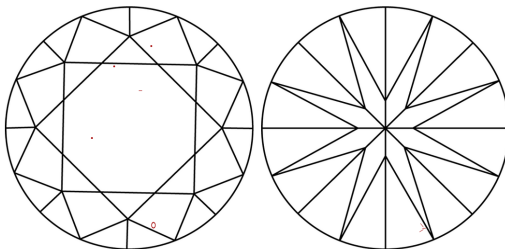
Comments: This Laboratory Grown Diamond was created by Chemical Vapor Deposition (CVD) growth process and may include post-growth treatment.
Type IIa

LG621487861
Report verification at igi.org

PROPORTIONS

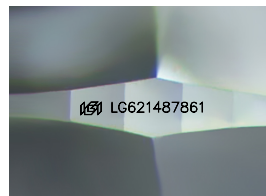


CLARITY CHARACTERISTICS



KEY TO SYMBOLS

Red symbols indicate internal characteristics.
Green symbols indicate external characteristics.



Sample Image Used

COLOR

D E F G H I J Faint Very Light Light

CLARITY

IF WS¹⁻² VS¹⁻² SI¹⁻² |¹⁻³

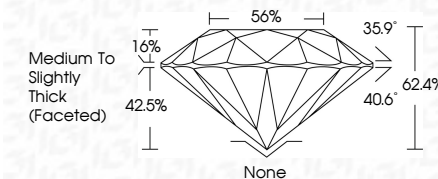
| Internally Flawless | Very Very Slightly Included | Very Slightly Included | Slightly Included | Included |
|------------------------|--------------------------------|---------------------------|----------------------|----------|
|------------------------|--------------------------------|---------------------------|----------------------|----------|



| | |
|-------------------------|--------------------------|
| May 2, 2024 | |
| IGI Report Number | LG621487861 |
| Description | LABORATORY GROWN DIAMOND |
| Shape and Cutting Style | ROUND BRILLIANT |
| Measurements | 8.35 - 8.42 X 5.24 MM |

GRADING RESULTS

| | |
|---------------|-------------|
| Carat Weight | 2.29 CARATS |
| Color Grade | F |
| Clarity Grade | VS 1 |
| Cut Grade | IDEAL |



ADDITIONAL GRADING INFORMATION

| | |
|----------------|------------------|
| Polish | EXCELLENT |
| Symmetry | EXCELLENT |
| Fluorescence | NONE |
| Inscription(s) | (15) LG621487861 |

Comments: This Laboratory Grown Diamond was created by Chemical Vapor Deposition (CVD) growth process and may include post-growth treatment.
Type IIa



© IGI 2020, International Gemological Institute

FD - 10 20

www.igi.org

THIS DOCUMENT WAS PRODUCED WITH THE FOLLOWING SECURITY MEASURES: SPECIAL DOCUMENT PAPER, INK SCREENS, WATERMARK, BACKGROUND DESIGNS, HOLOGRAM AND OTHER SECURITY FEATURES NOT LISTED AND DO EXCEED DOCUMENT SECURITY INDUSTRY GUIDELINES

| | | | | | | | | | | | | | | |
|-----------------|--------------------------|---------------------|-------------|---------------|-------------|-------|-------|------------------------------------|-------|-----------|-----------|--------------|-----------------|---|
| May 2, 2024 | GI Report No. G621487961 | 2.25 CARATS | F | VSI 1 | IDEAL | 62.4% | 56% | Medium to Slightly Thick (faceted) | None | EXCELLENT | EXCELLENT | None | 691 G621487961 | <p>Comments:</p> <p>The Laboratory Grown Diamond was grown using the HPHT growth process and may include post-growth treatment.</p> <p>Type IIA</p> |
| ROUND BRILLIANT | | 3.5 - 4.2 X 5.24 MM | Color Grade | Clarity Grade | Color Grade | Depth | Table | Girdle | Culet | Polish | Symmetry | Fluorescence | Inscriptions(s) | |