



ELECTRONIC COPY

LABORATORY GROWN DIAMOND REPORT

September 29, 2023	
IGI Report Number	LG602336768
Description	LABORATORY GROWN DIAMOND
Shape and Cutting Style	ROUND BRILLIANT
Measurements	7.09 - 7.12 X 4.36 MM
GRADING RESULTS	
Carat Weight	1.37 CARAT
Color Grade	F
Clarity Grade	VS 1
Cut Grade	IDEAL

ADDITIONAL GRADING INFORMATION

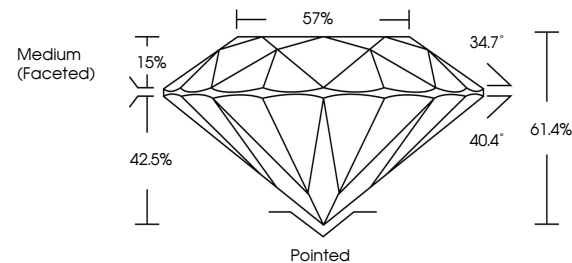
Polish	EXCELLENT
Symmetry	EXCELLENT
Fluorescence	NONE
Inscription(s)	 LG602336768

Comments: This Laboratory Grown Diamond was created by Chemical Vapor Deposition (CVD) growth process and may include post-growth treatment.
Type IIa

LABORATORY GROWN DIAMOND REPORT

LG602336768
Report verification at igi.org

PROPORTIONS

LABORATORY GROWN
DIAMOND REPORT

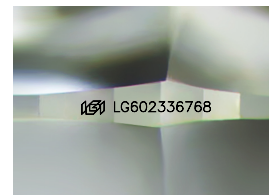
GRADING SCALES

CLARITY

IF	VVS ¹⁻²	VS ¹⁻²	SI ¹⁻²	I ¹⁻³
Internally Flawless	Very Very Slightly Included	Very Slightly Included	Slightly Included	Included

COLOR

D E F G H I J Faint Very Light Light



Sample Image Used



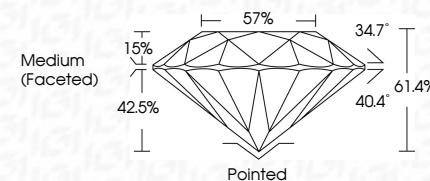
© IGI 2020, International Gemological Institute

FD - 10 20

www.igi.org

LABORATORY GROWN DIAMOND REPORT

September 29, 2023	
IGI Report Number	LG602336768
Description	LABORATORY GROWN DIAMOND
Shape and Cutting Style	ROUND BRILLIANT
Measurements	7.09 - 7.12 X 4.36 MM
GRADING RESULTS	
Carat Weight	1.37 CARAT
Color Grade	F
Clarity Grade	VS 1
Cut Grade	IDEAL



ADDITIONAL GRADING INFORMATION

Polish	EXCELLENT
Symmetry	EXCELLENT
Fluorescence	NONE
Inscription(s)	(15) LG-602336768

Comments: This Laboratory Grown Diamond was created by Chemical Vapor Deposition (CVD) growth process and may include post-growth treatment.
Type IIa



September 29, 2023
IGI Report No LG602336768
ROUND BRILLIANT

7.09 - 7.12 X 4.36 MM

7.09 - 7.12 X 4.36 MM
Carat Weight 1.37 CARAT

Catali Weiglin	1:37 Catali
Color Grade	F

Clarity Grade	VS 1
---------------	------

Cut Grade	IDEAL
Depth	41.40%

Depth	61.4%
Table	57%

Girdle

[illegible]

Culet	Pointed
Polish	EXCELLENT

Posit
Symmetry

Fluorescence	NONE
Inscription(s)	1631 G6M2396768

Registration (\$)

Comments:
This Laboratory Grown Diamond was

created by Chemical Vapor Deposition (CVD) growth process and may include

post-growth treatment.
Type IIa

2000