

ELECTRONIC COPY

LABORATORY GROWN DIAMOND REPORT

September 22, 2023	
IGI Report Number	LG600338269
Description	LABORATORY GROWN DIAMOND
Shape and Cutting Style	CUT CORNERED RECTANGULAR MODIFIED BRILLIANT
Measurements	7.36 X 5.06 X 3.12 MM

GRADING RESULTS

Carat Weight	1.03 CARAT
Color Grade	E
Clarity Grade	VVS 1

ADDITIONAL GRADING INFORMATION

Polish	EXCELLENT
Symmetry	EXCELLENT
Fluorescence	NONE

Inscription(s) LG600338269

Comments: As Grown - No indication of post-growth treatment.

This Laboratory Grown Diamond was created by High Pressure High Temperature (HPHT) growth process.

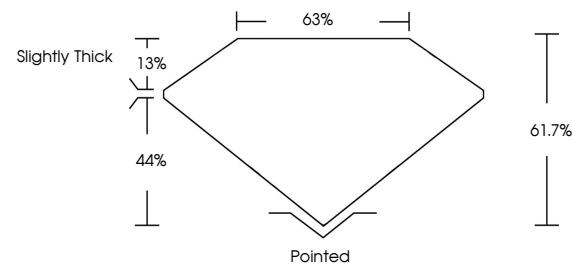
Type II

LABORATORY GROWN DIAMOND REPORT

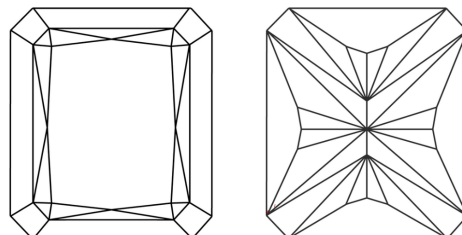
LG600338269

Report verification at igi.org

PROPORTIONS



CLARITY CHARACTERISTICS



KEY TO SYMBOLS

Red symbols indicate internal characteristics.
Green symbols indicate external characteristics.

LABORATORY GROWN
DIAMOND REPORT

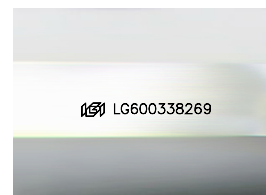
GRADING SCALES

CLARITY

IF	VVS ¹⁻²	VS ¹⁻²	SI ¹⁻²	I ¹⁻³
Internally Flawless	Very Very Slightly Included	Very Slightly Included	Slightly Included	Included

COLOR

D E F G H I J Faint Very Light Light



Sample Image Used



© IGI 2020, International Gemological Institute

FD - 10 20



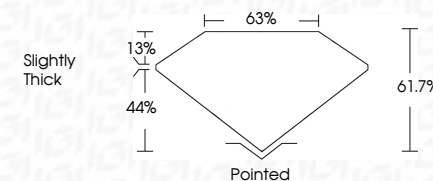
September 22, 2023	
IGI Report Number	LG600338269
Description	LABORATORY GROWN

Shape and Cutting Style

Measurements **7.36 X 5.06 X 3.12 MM**

GRADING RESULTS

Carat Weight	1.03 CARAT
Color Grade	E
Clarity Grade	VVS 1



ADDITIONAL GRADING INFORMATION

Polish	EXCELLEN
Symmetry	EXCELLEN
Fluorescence	NONI
Inscription(s)	15 LG60033826

Comments: As Grown - No indication of post-growth treatment.

This Laboratory Grown Diamond was created by High Pressure High Temperature (HPHT) growth process.

September 22, 2023	GI Report No LG40339269	CUT CORNERED RECT. MODIFIED BRILLIANT	1.03 CARAT	E	
	36.34 X 5.05 X 3.12 MM				
	Carat Weight	Color Grade	VVS 1	61.7%	65%
	Clarity Grade	Depth	Excellent	Excellent	Excellent
	Table	Girdle	Slightly Thick	None	None
	Fluorescence	Symmetry	Polished	Excellent	Excellent
	Inscriptions(s)	Fluorescence	None	None	None
	Comments:				
	1. No indication of post-growth treatment.				
	2. The Laboratory Growth Diamond was created by High Pressure High Temperature (HPHT) growth process.				
	Type II				