



**ELECTRONIC COPY**

## LABORATORY GROWN DIAMOND REPORT

August 26, 2023	
IGI Report Number	LG596346084
Description	LABORATORY GROWN DIAMOND
Shape and Cutting Style	ROUND BRILLIANT
Measurements	7.09 - 7.14 X 4.34 MM
<b>GRADING RESULTS</b>	
Carat Weight	1.36 CARAT
Color Grade	F
Clarity Grade	VS 1
Cut Grade	IDEAL

### ADDITIONAL GRADING INFORMATION

Polish	EXCELLENT
Symmetry	EXCELLENT
Fluorescence	NONE
Inscription(s)	 LG596346084

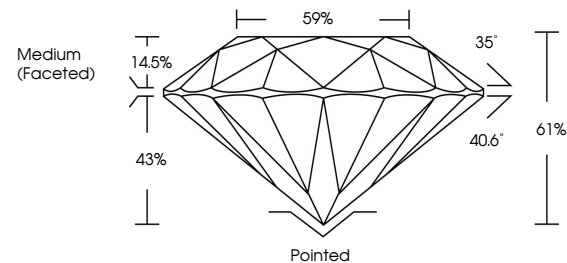
Comments: This Laboratory Grown Diamond was created by Chemical Vapor Deposition (CVD) growth process and may include post-growth treatment.  
Type IIa

## LABORATORY GROWN DIAMOND REPORT

LG596346084

Report verification at [igi.org](http://igi.org)

## PROPORTIONS



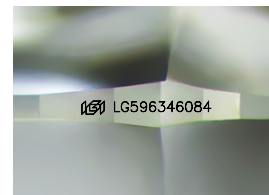
## GRADING SCALES

## CLARITY

IF	VVS <sup>1-2</sup>	VS <sup>1-2</sup>	SI <sup>1-2</sup>	I <sup>1-3</sup>
Internally Flawless	Very Very Slightly Included	Very Slightly Included	Slightly Included	Included

**COLOR**

D E F G H I J Faint Very Light Light



Sample Image Used



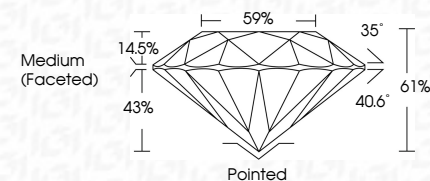
© IGI 2020, International Gemological Institute

FD - 10 20

**www.igi.org**

## LABORATORY GROWN DIAMOND REPORT

August 26, 2023	
IGI Report Number	LG596346084
Description	LABORATORY GROWN DIAMOND
Shape and Cutting Style	ROUND BRILLIANT
Measurements	7.09 - 7.14 X 4.34 MM
<b>GRADING RESULTS</b>	
Carat Weight	1.36 CARAT
Color Grade	F
Clarity Grade	VS 1
Cut Grade	IDEAL



### ADDITIONAL GRADING INFORMATION

Polish	EXCELLENT
Symmetry	EXCELLENT
Fluorescence	NONE
Inscription(s)	 LG596346084

Comments: This Laboratory Grown Diamond was created by Chemical Vapor Deposition (CVD) growth process and may include post-growth treatment.  
Type IIa



IG

August 26, 2023  
IGI Report No LG596346084  
ROUND BRILLIANT

7.09 - 7.14 X 4.34 MM	
Carat Weight	1.36 CARAT
Color Grade	F
Clarity Grade	VS 1
Cut Grade	IDEAL
Depth	61%
Table	59%
Girdle	Medium (Excellent)

Culet	Pointed
Polish	EXCELLENT
Symmetry	EXCELLENT
Fluorescence	NONE

**Comments:**  
This Laboratory Grown Diamond was created by Chemical Vapor Deposition (CVD) growth process and may include post-growth treatment.