



INTERNATIONAL GEMOLOGICAL INSTITUTE

ELECTRONIC COPY

LABORATORY GROWN DIAMOND REPORT

LG577385139

LABORATORY GROWN DIAMOND REPORT

IGI LABORATORY GROWN DIAMOND IDENTIFICATION REPORT

April 14, 2023
IGI Report Number LG577385139
Description LABORATORY GROWN DIAMOND
Shape and Cutting Style CUT CORNERED RECTANGULAR MODIFIED
BRILLIANT
Measurements 6.50 X 4.46 X 3.04 MM

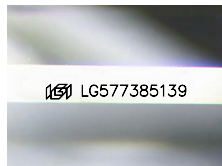
GRADING RESULTS

Carat Weight 0.73 CARAT
Color Grade E
Clarity Grade VVS 2

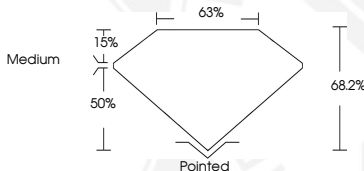
ADDITIONAL GRADING INFORMATION

Polish EXCELLENT
Symmetry EXCELLENT
Fluorescence NONE
Inscription(s) IGI LG577385139

Comments: As Grown - No indication of post-growth treatment.
This Laboratory Grown Diamond was created by High Pressure High
Temperature (HPHT) growth process.
Type II



Sample Image Used



IGI LABORATORY GROWN DIAMOND ID REPORT

April 14, 2023
IGI Report Number LG577385139
CUT CORNERED RECTANGULAR
MODIFIED BRILLIANT
6.50 X 4.46 X 3.04 MM
Carat Weight 0.73 CARAT
Color Grade E
Clarity Grade VVS 2
Polish EXCELLENT
Symmetry EXCELLENT
Fluorescence NONE
Inscription(s) IGI LG577385139
Comments: As Grown - No
indication of post-growth
treatment. This Laboratory Grown
Diamond was created by High
Pressure High Temperature (HPHT)
growth process. Type II

IGI LABORATORY GROWN DIAMOND ID REPORT

April 14, 2023
IGI Report Number LG577385139
CUT CORNERED RECTANGULAR
MODIFIED BRILLIANT
6.50 X 4.46 X 3.04 MM
Carat Weight 0.73 CARAT
Color Grade E
Clarity Grade VVS 2
Polish EXCELLENT
Symmetry EXCELLENT
Fluorescence NONE
Inscription(s) IGI LG577385139
Comments: As Grown - No
indication of post-growth
treatment. This Laboratory Grown
Diamond was created by High
Pressure High Temperature (HPHT)
growth process. Type II



THIS DOCUMENT WAS PRODUCED WITH THE FOLLOWING SECURITY MEASURES: SPECIAL DOCUMENT PAPER, INK SCREENS, WATERMARK,
BACKGROUND DESIGN, HOLOGRAM AND OTHER SECURITY FEATURES NOT LISTED AND DO EXCEED DOCUMENT SECURITY INDUSTRY GUIDELINES.

For terms & conditions and to verify this report, please visit www.igi.org